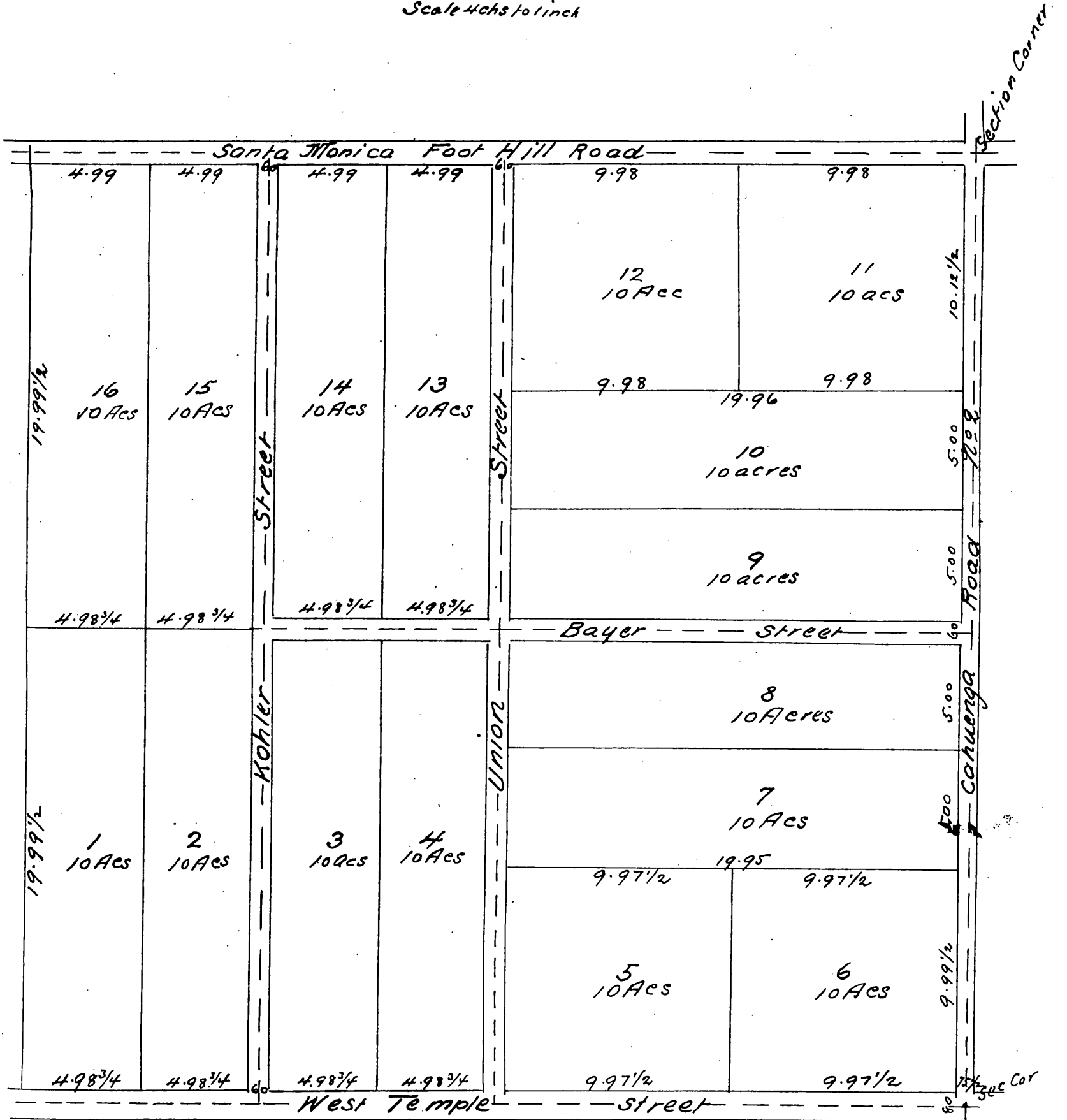


MAP
 of
J. A. Weid's Subdivision
 of the
NE 1/4 Sec 14 T. 1. S. R. 14 W. S. B. M
 Amended Survey Feb 1st 1887. By
E. F. Wright County Surveyor
 Scale 4 chs to 1 inch



A full true and correct Copy of the original (reduced to the scale
 of 5 chains to one inch) recorded February 1st 1887 at 40 min past
 2 P. M. at request of J. A. Weid
 Frank A. Gibson County Recorder
 By Geo Bugbee Deputy.