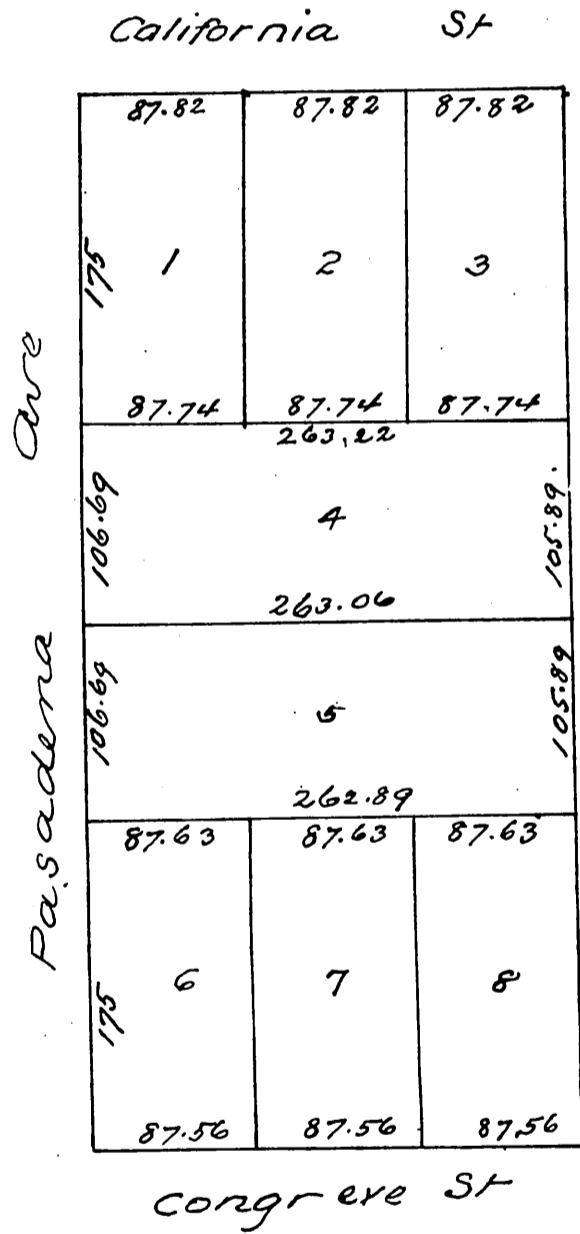


4141

**MAP**  
OF  
**Leonard's Subdivision**  
of part of Division F Lands of San Gabriel  
Orange Grove Association

Being Subdivision of tract described in deed  
recorded in Book 98 of Deeds page 473 Records  
of Los Angeles County



A full, true and correct copy of the original  
recorded Feb'y 5. 1887 at 25 min past 1 P.M.  
at request of Chas M Leonard  
Frank A Gibson County Recorder  
by Geo Bugbee Deputy