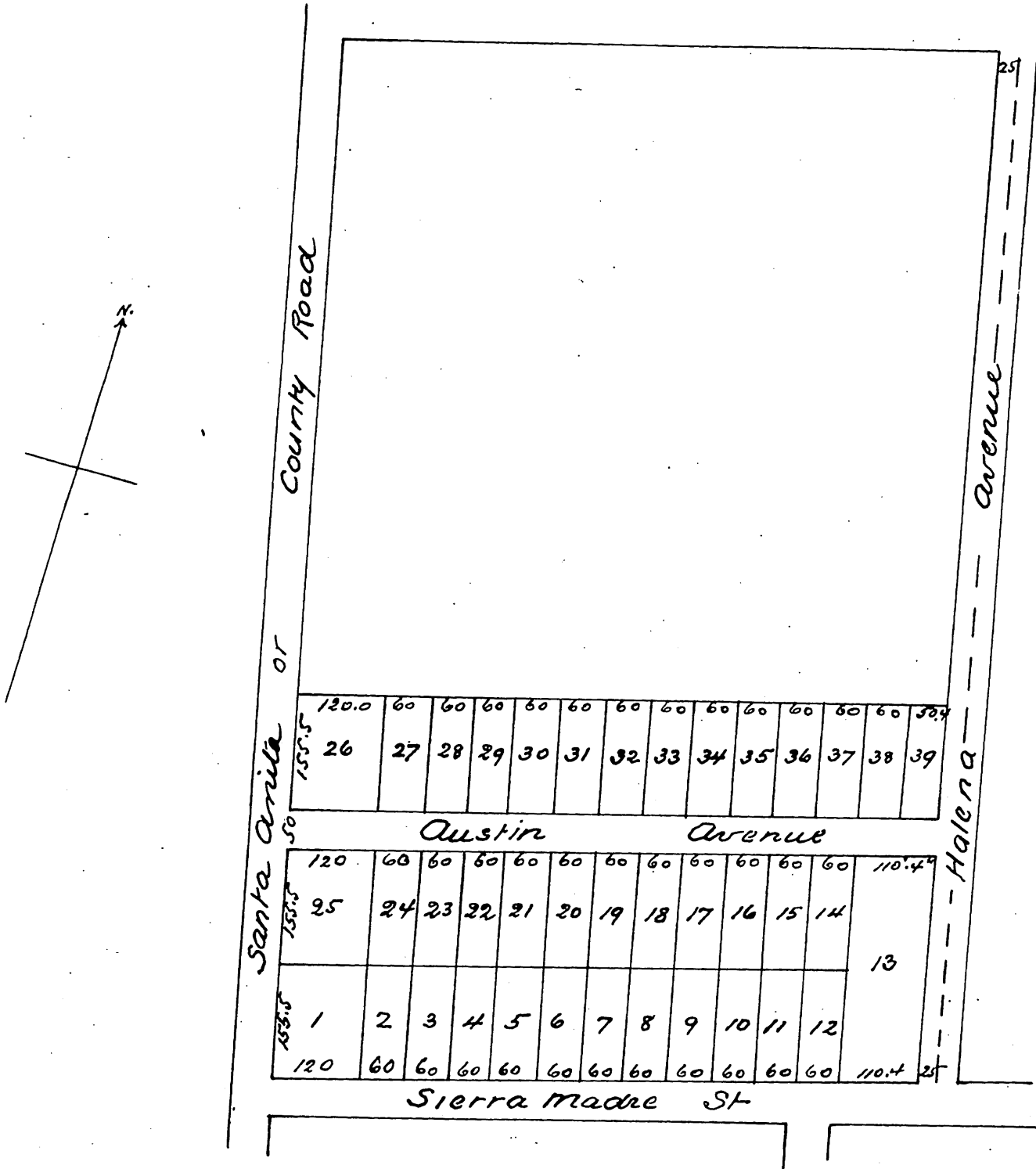


Philipp Engels Subdivision
of
S.W. corner of Bonestell Tract
Being also an Addition to Lamanda Park
Stimson & Archer Architects and Civil Engineers
Scale 100 feet = one inch



A full, true and correct copy of the original
(reduced to the scale of 200 feet to one inch)
recorded Feb 2, 1887 at 10:30 AM at request of
Philipp Engel.
Frank A. Stimson County Recorder
By Geo Bugsee Deputy