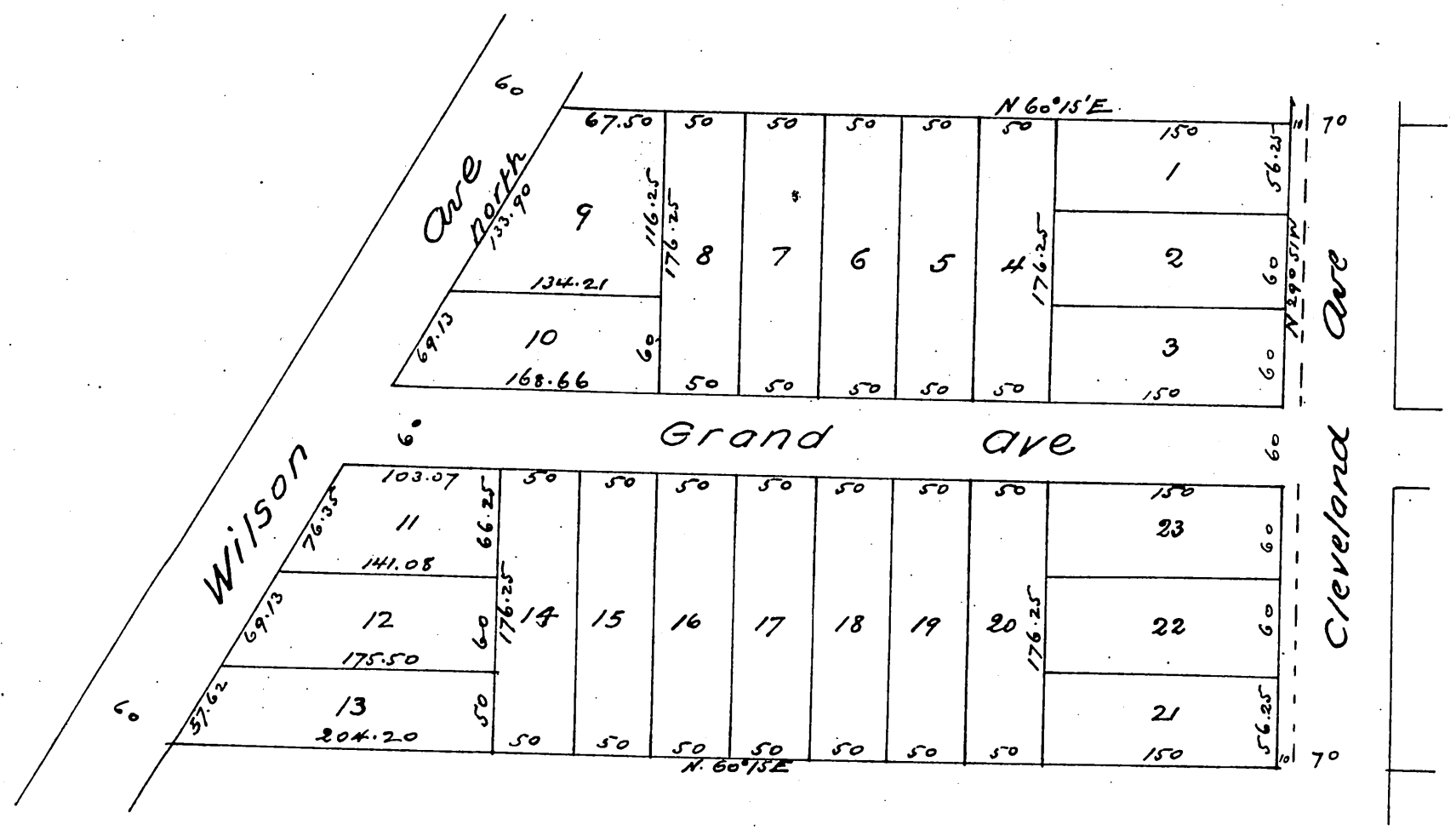


Map of Outhwaite's Subdivision of Lot 2 Range 12 Alhambra Addn Tract

Jan. 3. 1887 L. Friel C. E.
Scale 50 ft to 1 in



A full true and correct copy of the original
(reduced to the scale of 100 feet to one inch)
recorded February 3, 1887 at 49 min past 1 P.M.
at request of W. H. Whittemore
Frank A. Gibson County Recorder
By Geo Bugbee Deputy