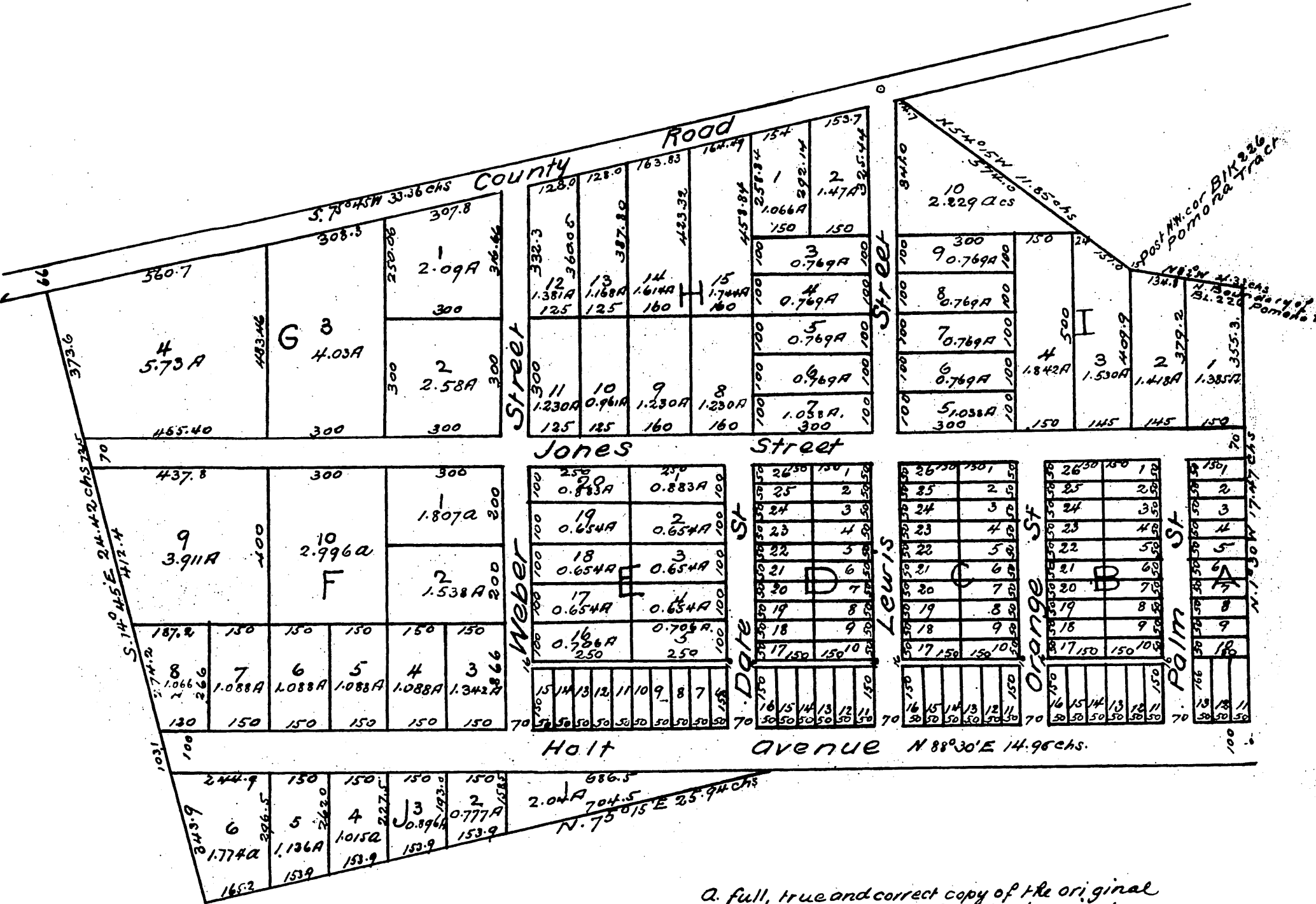


**MAP**  
 OF THE  
**Carrier Tract**  
 as subdivided by  
 The Los Angeles Land Association  
 Pomona Los Angeles Co Cal  
 Scale 200 feet to inch  
 Jas T. Taylor Surveyor January 1887



A full, true and correct copy of the original  
 (reduced to the scale of 300 feet to one inch  
 recorded February 4, 1887 at 15 min past 4 P.M.  
 at request of Mark G. Jones  
 Frank A. Gibson County Recorder  
 By Geo Rugber Deputy

Areas to center of streets