



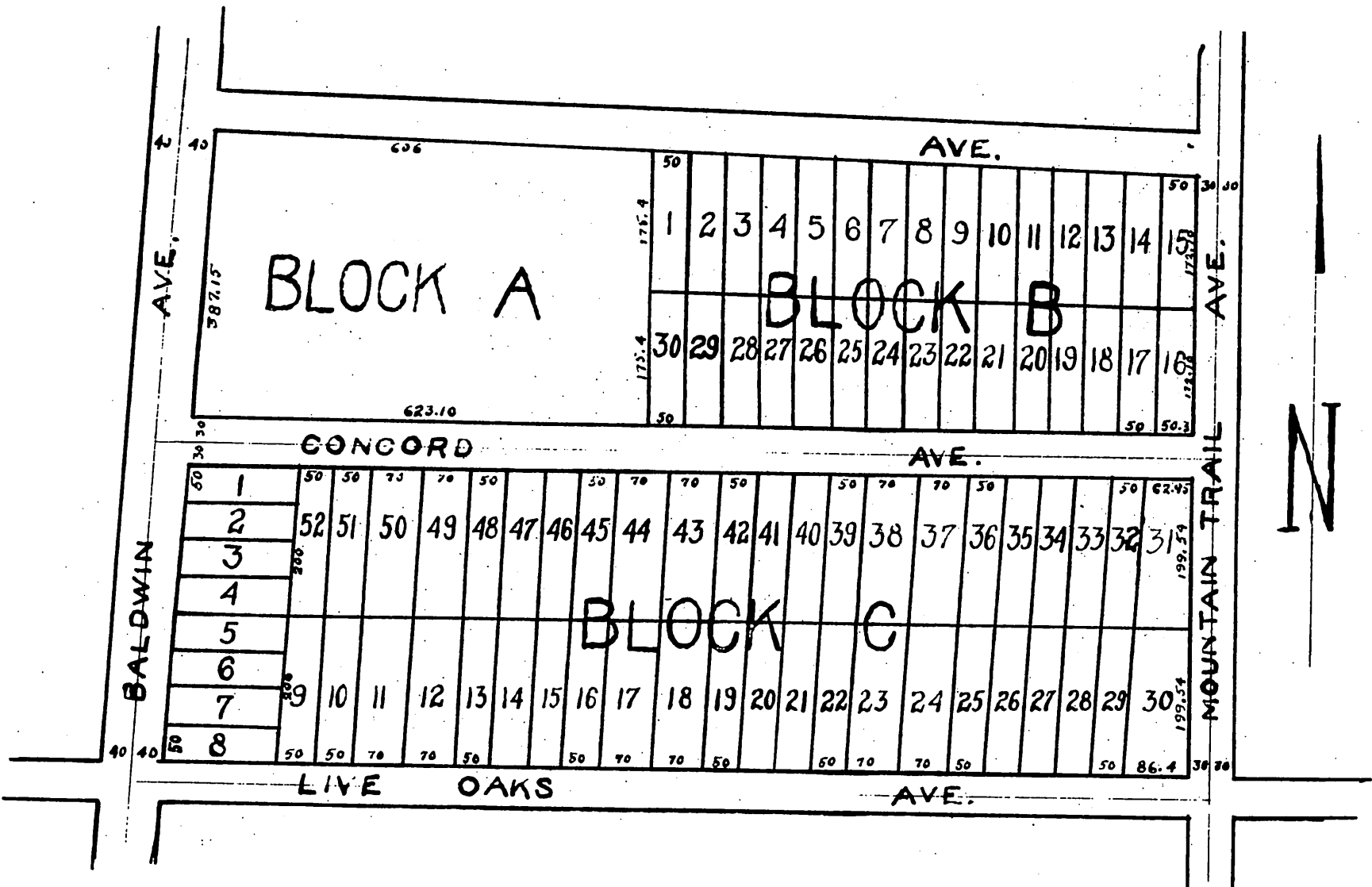
MAP OF G. B. DAVIS TRACT

being a subdivision of the southerly portion of lots 6+7 Sierra Madre Tract

Sierra Madre L. A. Co. Cal.

Surveyed Jan. 1887 by J. M. Willard C.E.

Scale 80 ft. to 1 inch
Scale 200 ft. to 1 in.



Recorded Feb. 5, 1887 at 9:48 A.M.
at request of G. W. Clement