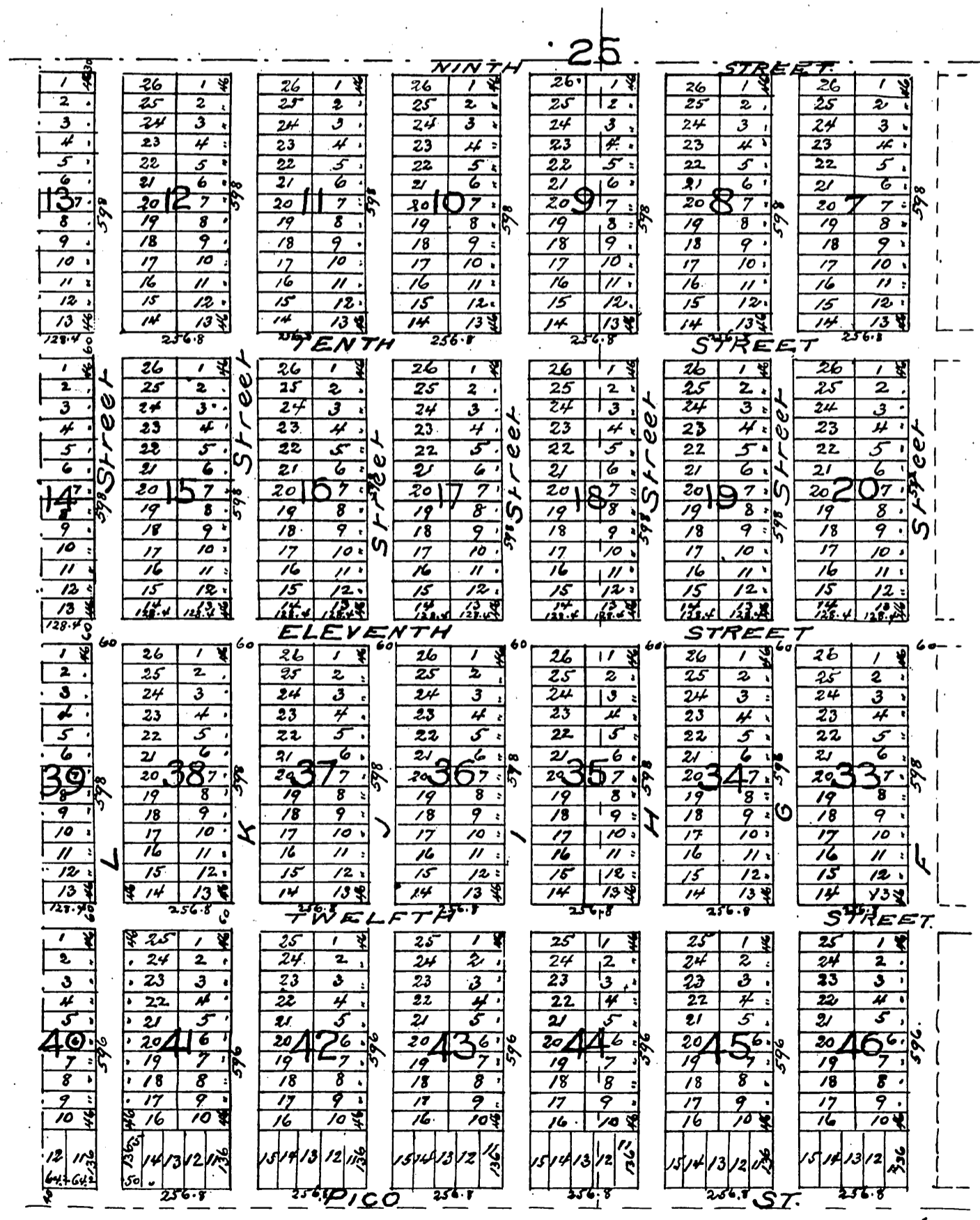
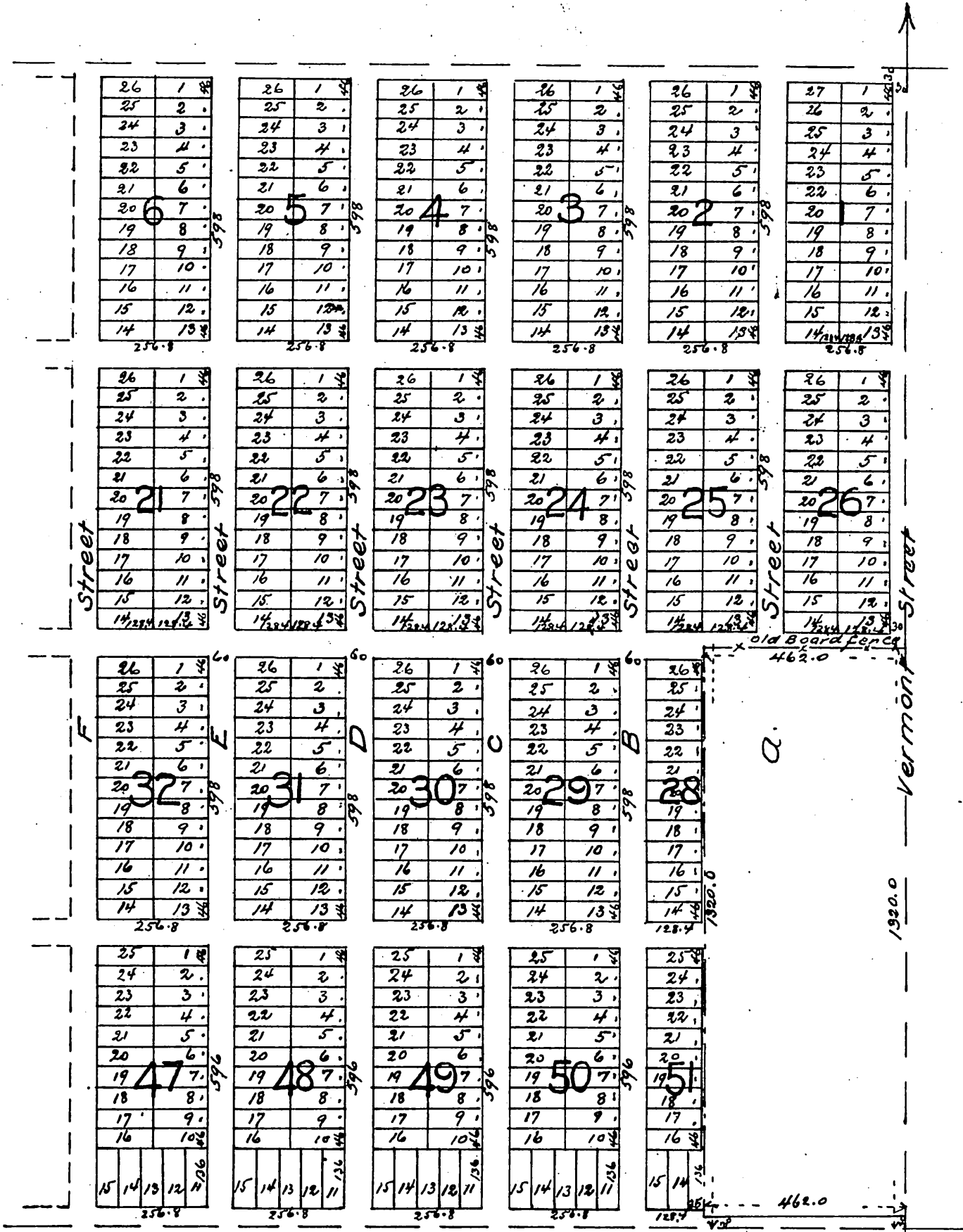


MAP OF Electric Railway Homestead Association

Being the East 1/2 of South west 1/4 and the South east 1/4 of
Sec 25 Township 1 South Range 14 W S. B. M





a full, true and correct copy of the original
 (reduced to the scale of 300 feet to one inch)
 recorded Feby. 5-1887 at 16 min past 10 A.M. at
 request of Electric Railway Homestead Assn.

Frank A. Gibson County Recorder
 By Geo. Bugbee Deputy