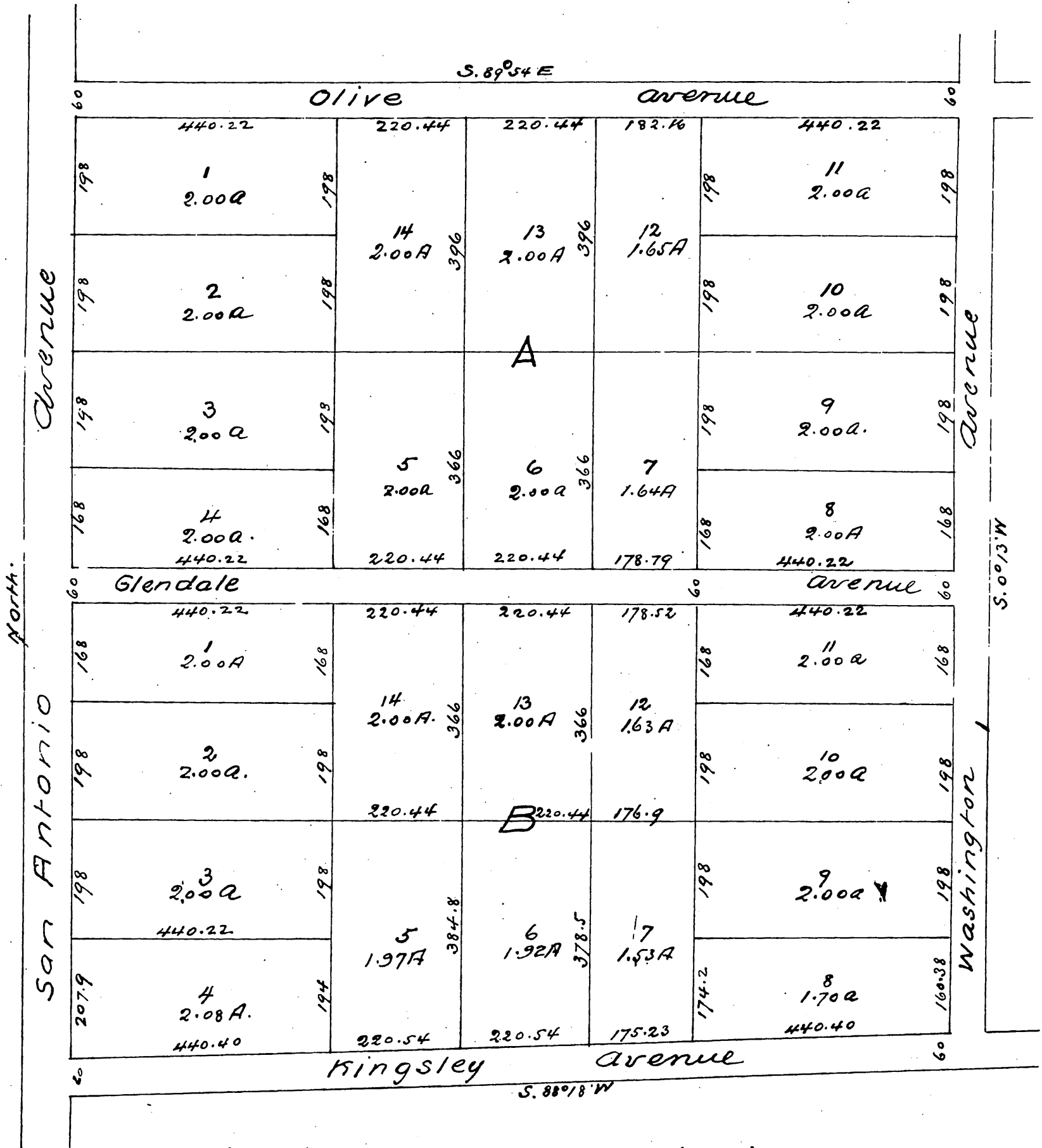


MAP
 OF
Ambrose, Brown Haley & Messengers's
 Subdivision of Block 4 of the Kingsley Tract
 Rancho San Jose Los Angeles Co Cal
 Surveyed January 1887 by Jas. T. Taylor Surveyor
 Scale 100 feet to 1 inch

Areas to center of Glendale Avenue



A full, true and correct copy of the Original (reduced to Scale of 200 feet to one inch) recorded February 5, 1887 at 11³⁰ A.M. at request of Jas T. Taylor
 Frank A. Gibson County Recorder
 By Geo. Rugebee Deputy.