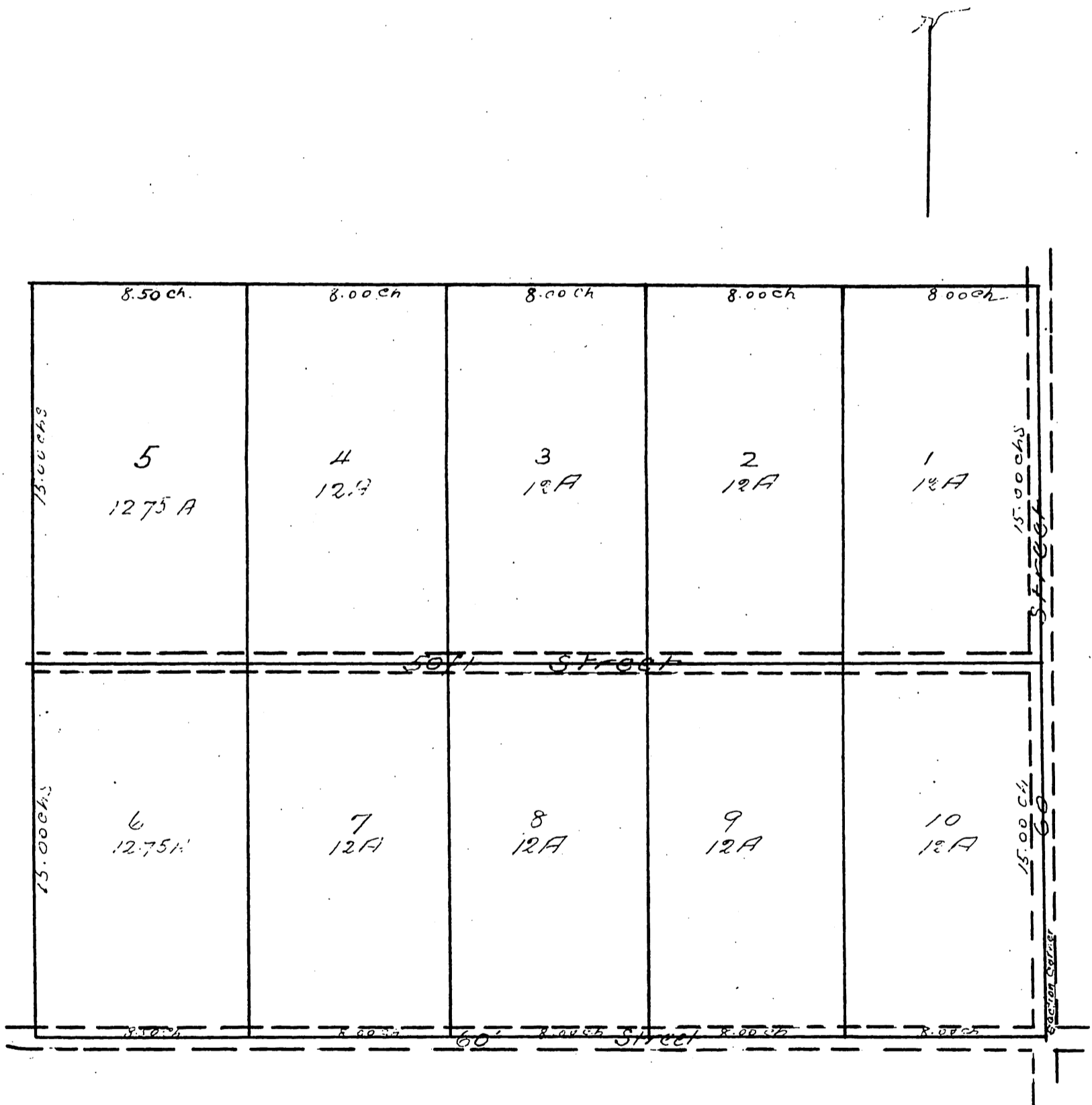


*Poindexter & Vickers Subdivisions*  
*in*  
*Section 29 T4. S. R10W*  
*And being the S 1/2 of the S. E 1/4 and S 1/2 of the*  
*N 1/2 of the S E 1/4 of said Section*  
*Scale 4 ch to one inch*



*The measurements run to and the acreage includes*  
*to the center of the Streets*  
*Surveyed December 27<sup>th</sup> 1886 by H. C. Kellogg*

*a full true and correct copy of the Original (reduced to the scale of*  
*5 chains to one inch) recorded Feb 5. 1887 at 5.55 min past 2 P.M*  
*at request of W. T. English*      *Frank A. Gibson County Recorder*  
*By Geo. Bugher Deputy*