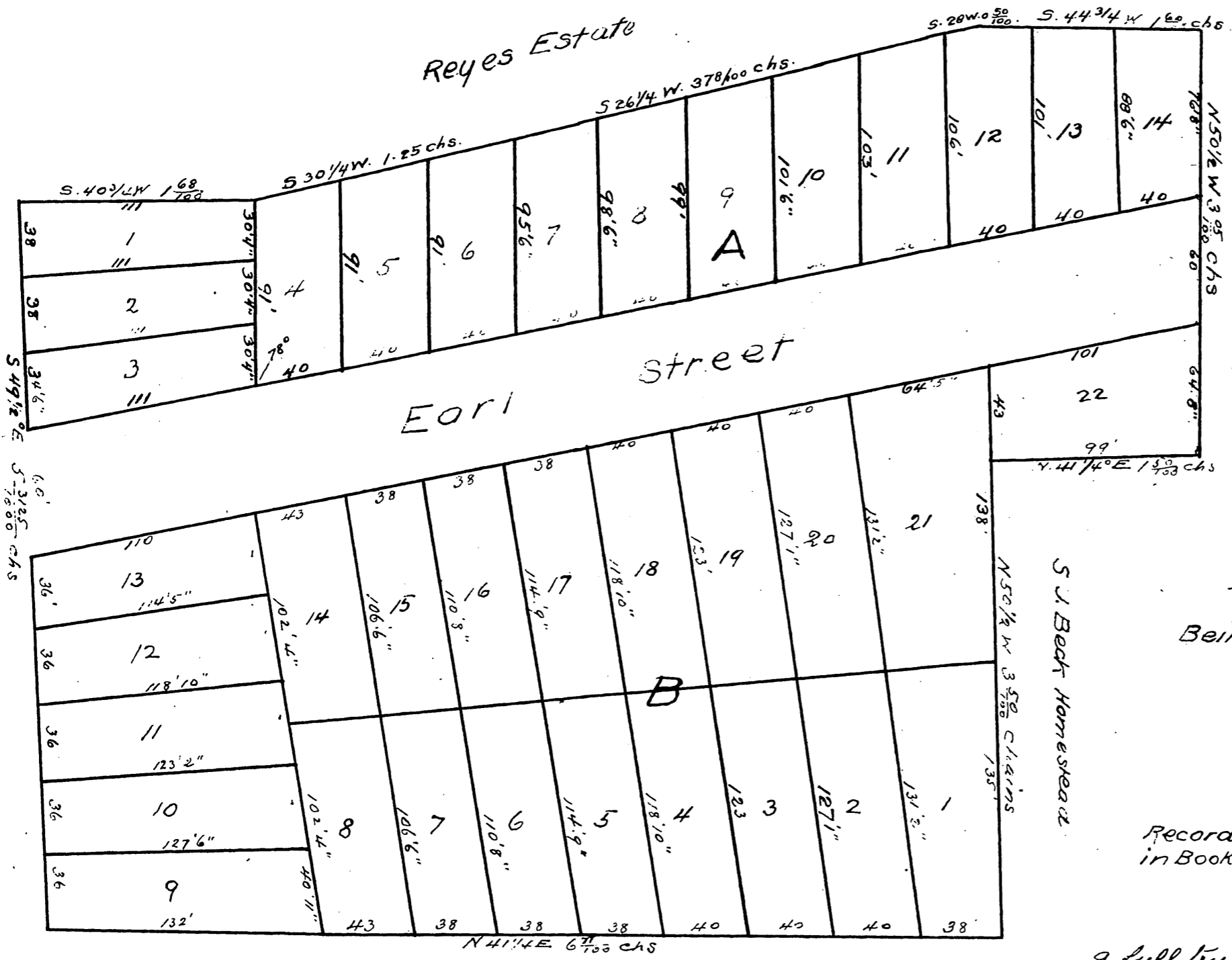


Seventh Street



Beck Tract

Being that portion of the S. J. Beck property
 lying Northeast of Seventh St
 Scale 50 ft to 1 inch

Surveyed by Genoise Purcell C.E.

Recorded at request of H. H. Bixby Dec 23, 1886 at 4 P.M.
 in Book 12 Page 99 of Miscel. Los Angeles Co Rec
 Frank A. Gibson County Recorder
 by Geo. Bugbee Deputy.

a full true and correct copy of the Original
 (reduced to the scale of 60 feet to one inch)
 recorded Feb 5th 1887 at 14 min past 3 P.M.
 at request of H. H. Bixby
 Frank A. Gibson County Recorder
 by Geo. Bugbee Deputy.