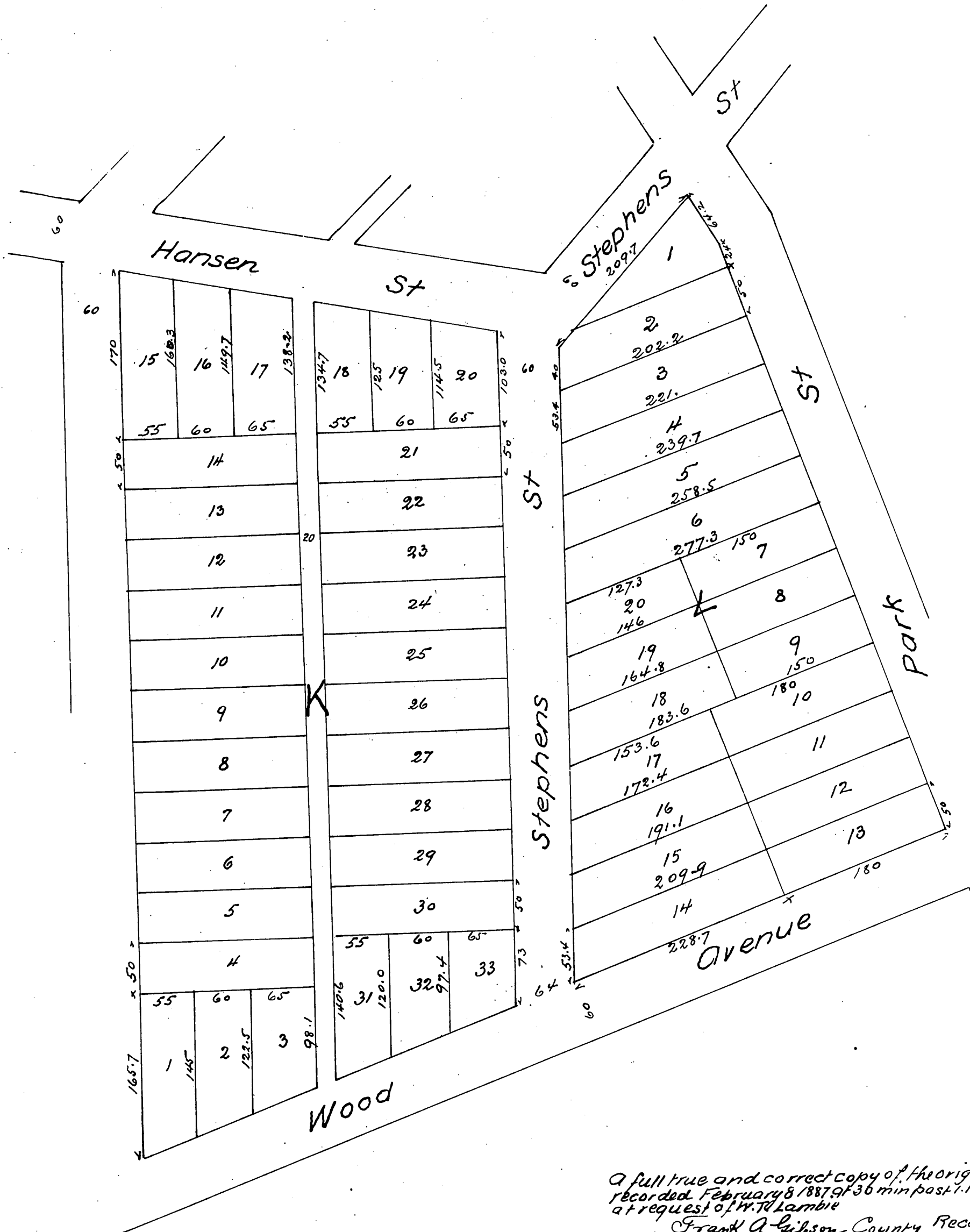


MAP
OF
Lambie's Subdivision
OF
Lot 13 Orange Slope Tract

East Los Angeles
Scale 100ft = 1 in



A full true and correct copy of the original
recorded February 8 1887 of 36 min past 11
at request of W. T. Lambie
Frank A. Gibson County Recorder
By Geo. Bugbee County Clerk