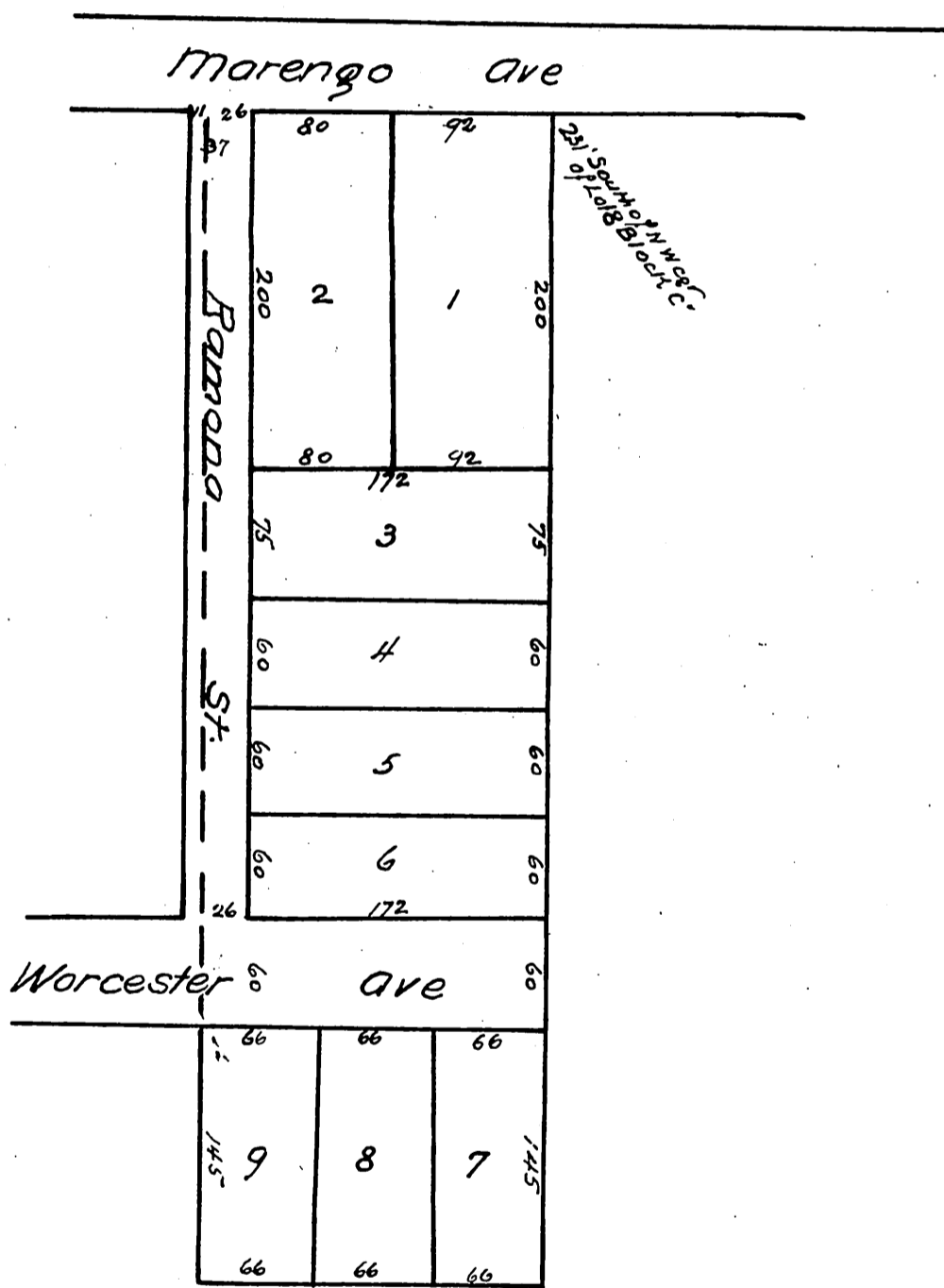


1439

Map  
of  
Ogden's Subdivision  
of the northerly portion  
of Lot 8 Block "C"  
San Pasqual Tract  
Pasadena Cal

Scale 100 ft = 1 inch

Surveyed Jan 1887 by  
J.M Willard C.E



A full true and correct copy of the Original  
recorded Feb. 10 1887 at 30 min past 12 M. at  
request of H.W. Ogden

Frank A Gibson County Recorder  
By Geo Bugbee Deputy.