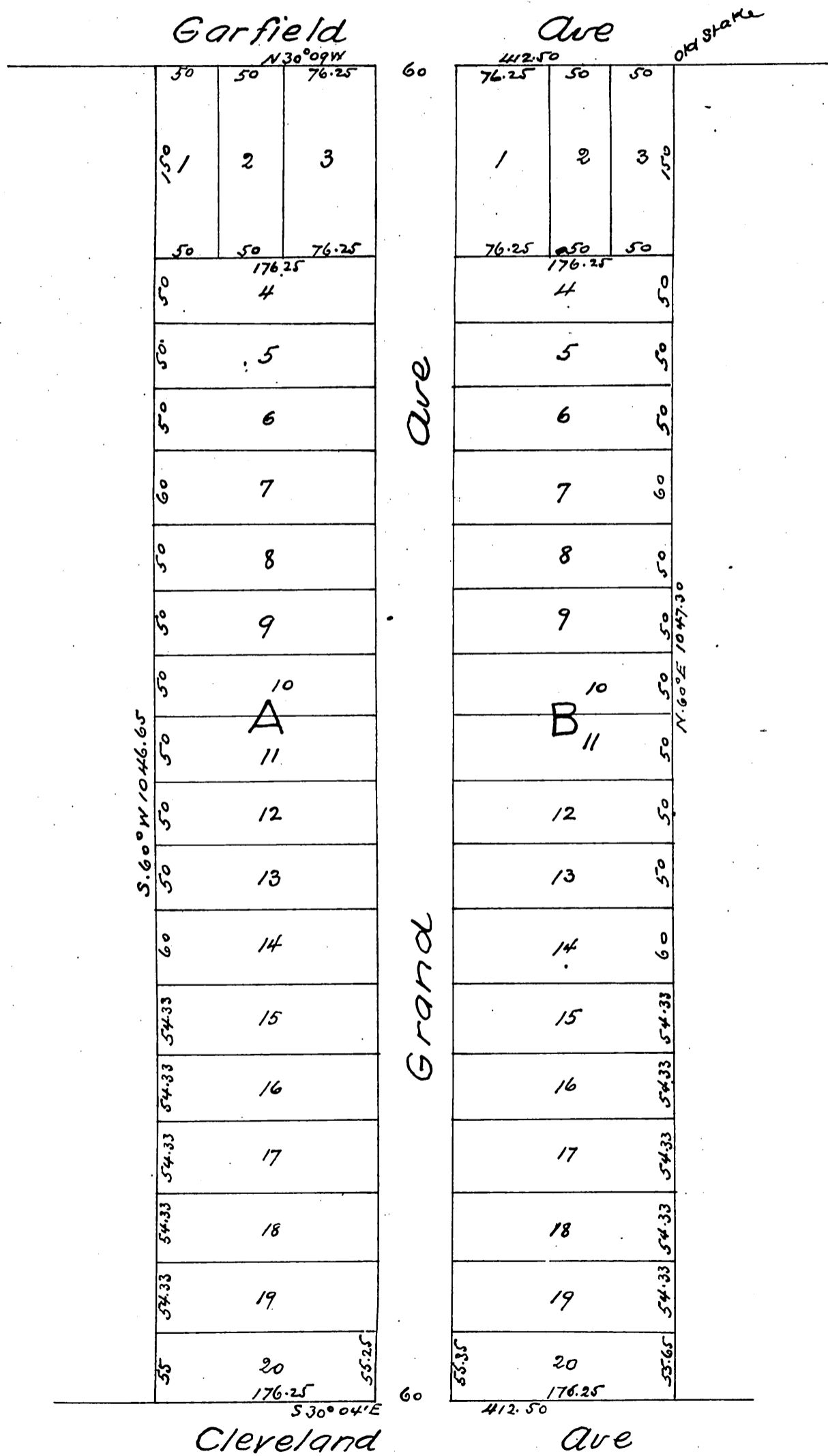


MAP  
 of  
 Lattin's Sub-division  
 of Lot 2 of Range 10 and Lot 2 of Range 11  
 of Alhambra Addition Tract  
 Los Angeles Co Cal  
 Surveyed Dec 13<sup>th</sup> 1886 By Geo E Pillsbury  
 Scale 100 ft to 1 inch



a full true and correct copy of the original recorded Feby  
 12. 1887 at 37 min past 10 a m at request of B. C. Lattin  
 Frank A Gibson County Recorder  
 by Geo Bugbee Deputy