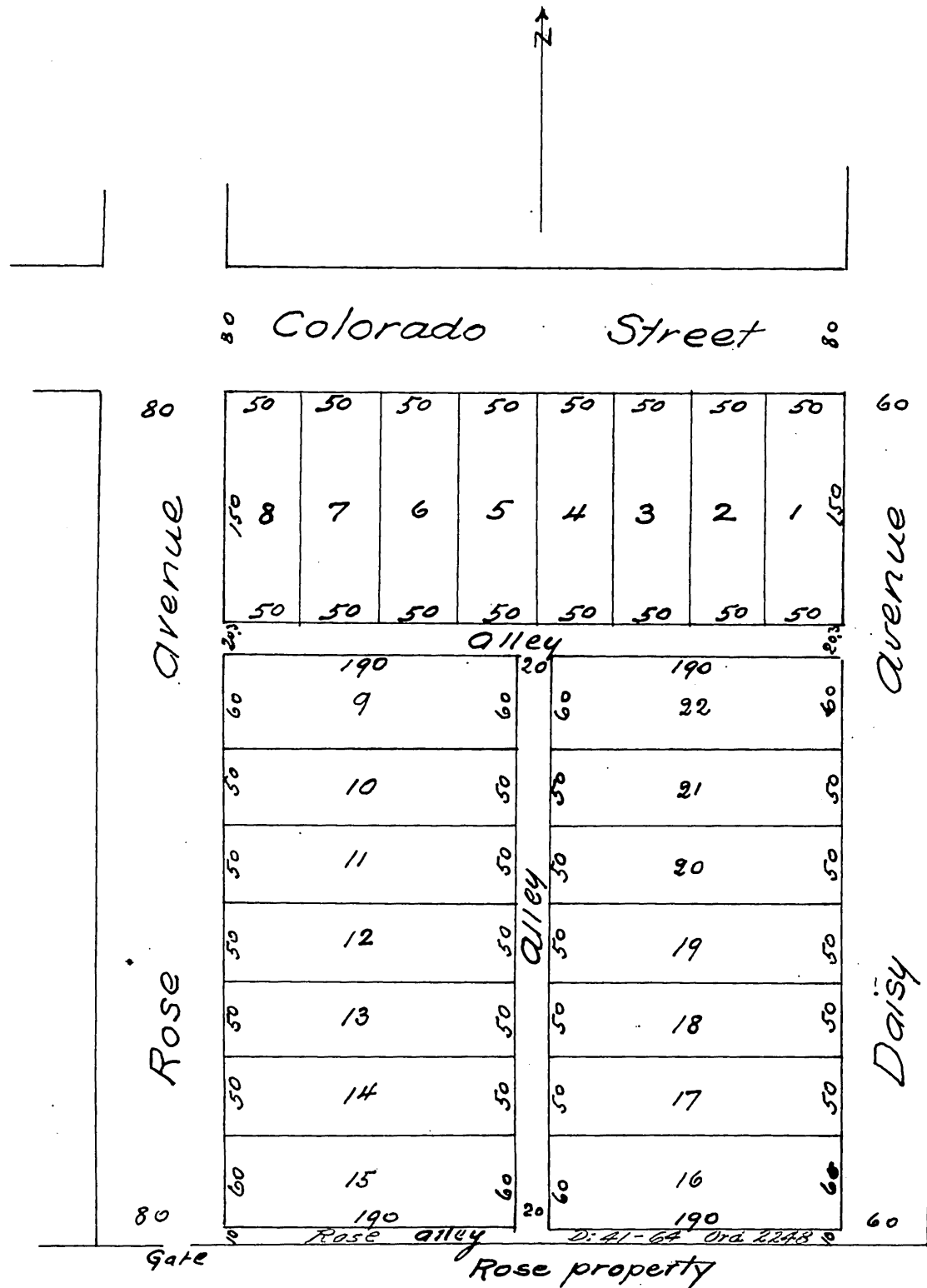


# H. S. Thompson's Subdivision of Lot 3, Block 16 Lamanda Park Los Angeles Co Cal

Scale 50 feet = inch

Feb 1887

E.M. Jessup Surveyor



A full true and correct copy of the original  
(reduced to the scale of 100ft to one inch) recorded  
February 19<sup>th</sup> 1887 at 20 min past 10 A.M. at request  
of Hyman Allen

Frank A. Gibson County Recorder  
By Geo. Bugbee Deputy