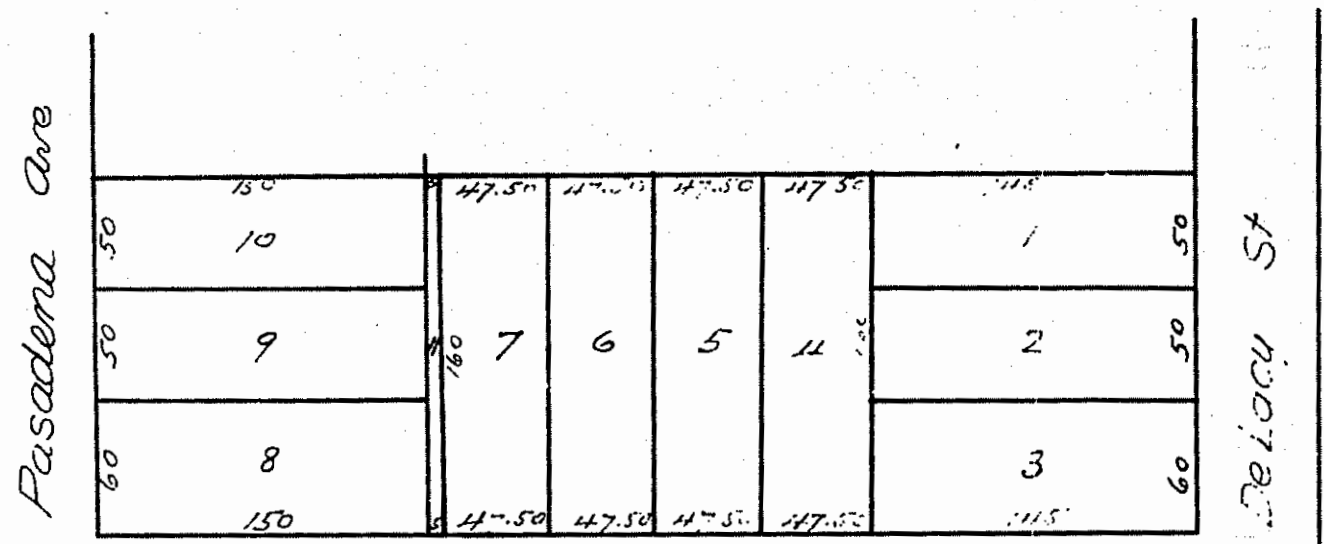


1450

Corrected  
**MAP**  
 of  
**Thomas F Flynn's Subdivision**  
 OF THE  
 Westerly portion of the South four and three  
 quarters acres of Lot 8 Berry and Fillich's  
 Subdivision of a portion of the lands  
 of the San Gabriel Orange  
 Grove Association  
 Pasadena Cal  
 Scale 40 ft = 1 inch



A full, true and correct copy of the original  
 reduced to a scale of 80 feet to one inch, recorded  
 February 19, 1887 at 12 min past 2 p.m. at request of  
 Thomas F. Flynn

Frank A. Tolson, County Recorder  
 By Geo Bugbee, Deputy.