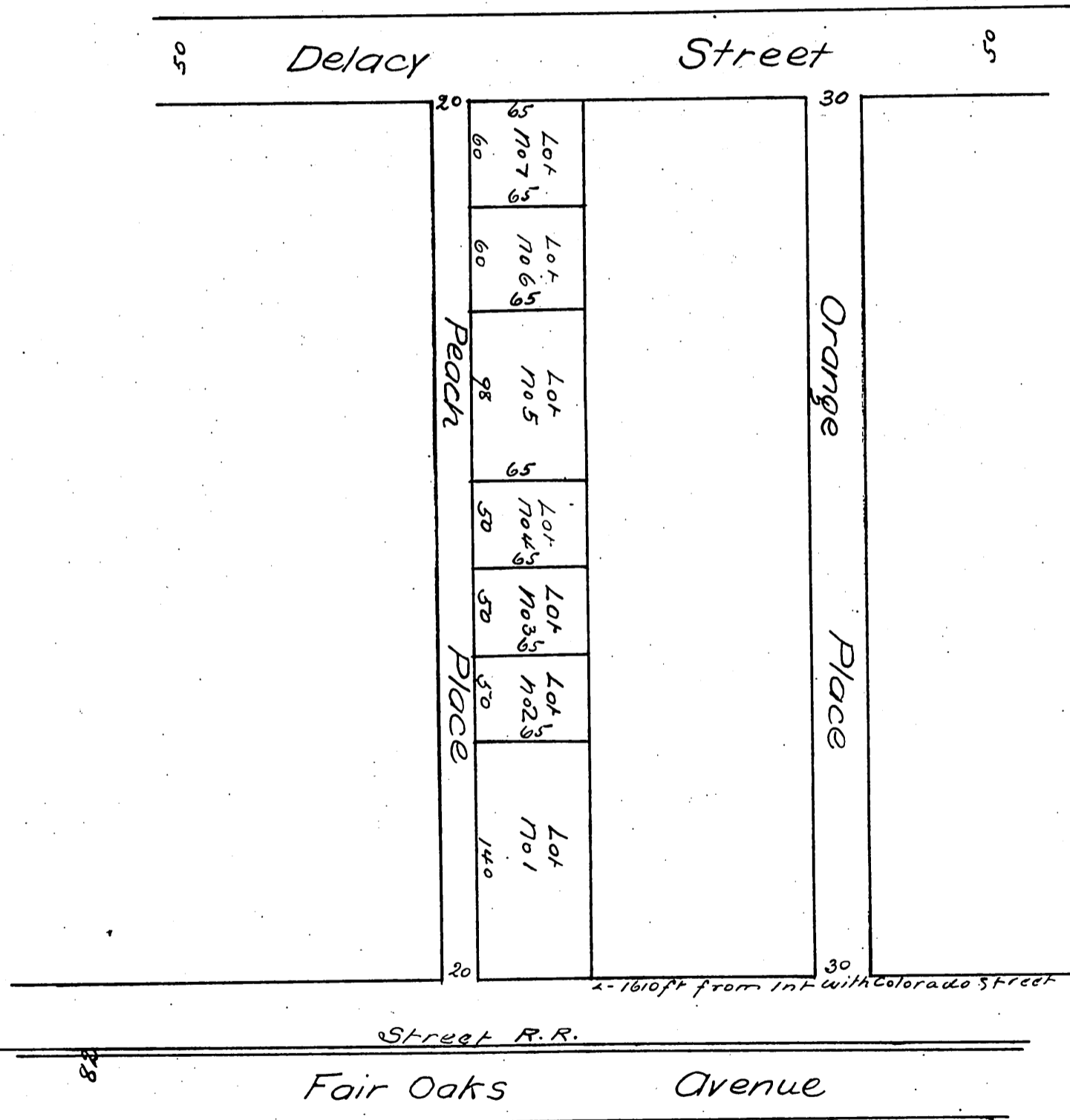


George Taylor's Subdivision

of a portion of Lot 8 of the Berry & Elliotts Subdivision
of the San Gabriel Orange Grove Association
The map of which is recorded in the Miscellaneous
Records of L. A. County in Book 2 Page 600



A full true and correct Copy of the Original
 recorded February 23. 1887 at 15 min past 10 am at
 request of George Taylor
 Frank A. Gibson Co. Recorder
 By Geo Bugbee Deputy