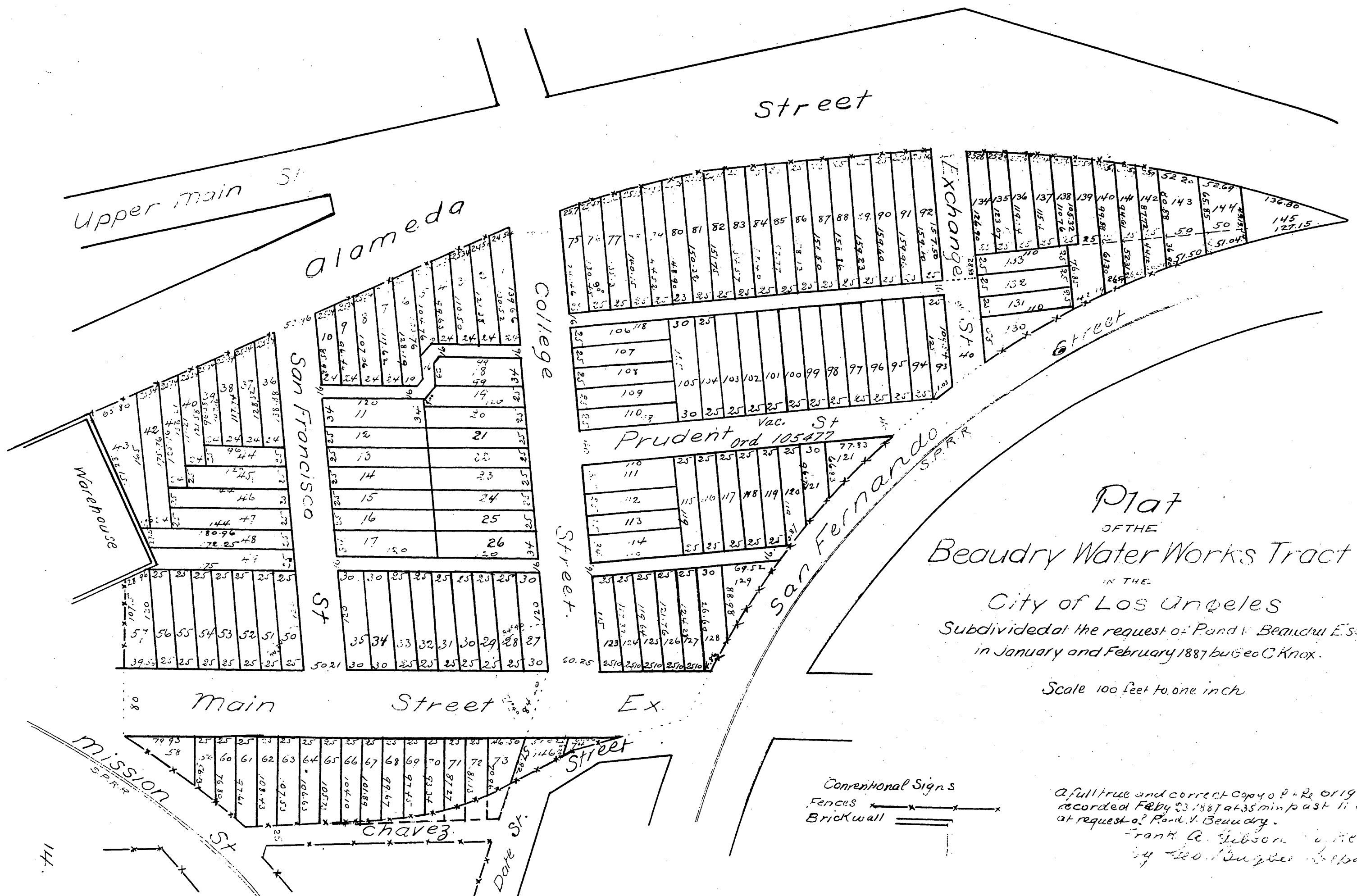
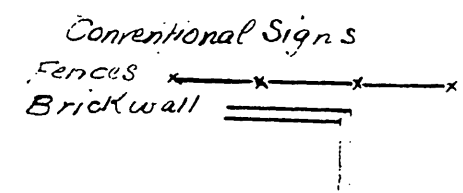


111



Plat  
 OF THE  
 Beaudry Water Works Tract  
 IN THE  
 City of Los Angeles  
 Subdivided at the request of Rand V. Beaudry Esq's  
 in January and February 1887 by Geo C Knox.

Scale 100 feet to one inch



A full true and correct copy of the original  
 recorded Feb 23 1887 at 35 min past 11 A.M.  
 at request of Rand V. Beaudry.  
 Frank A. Gibson, Recorder  
 by Geo C Knox