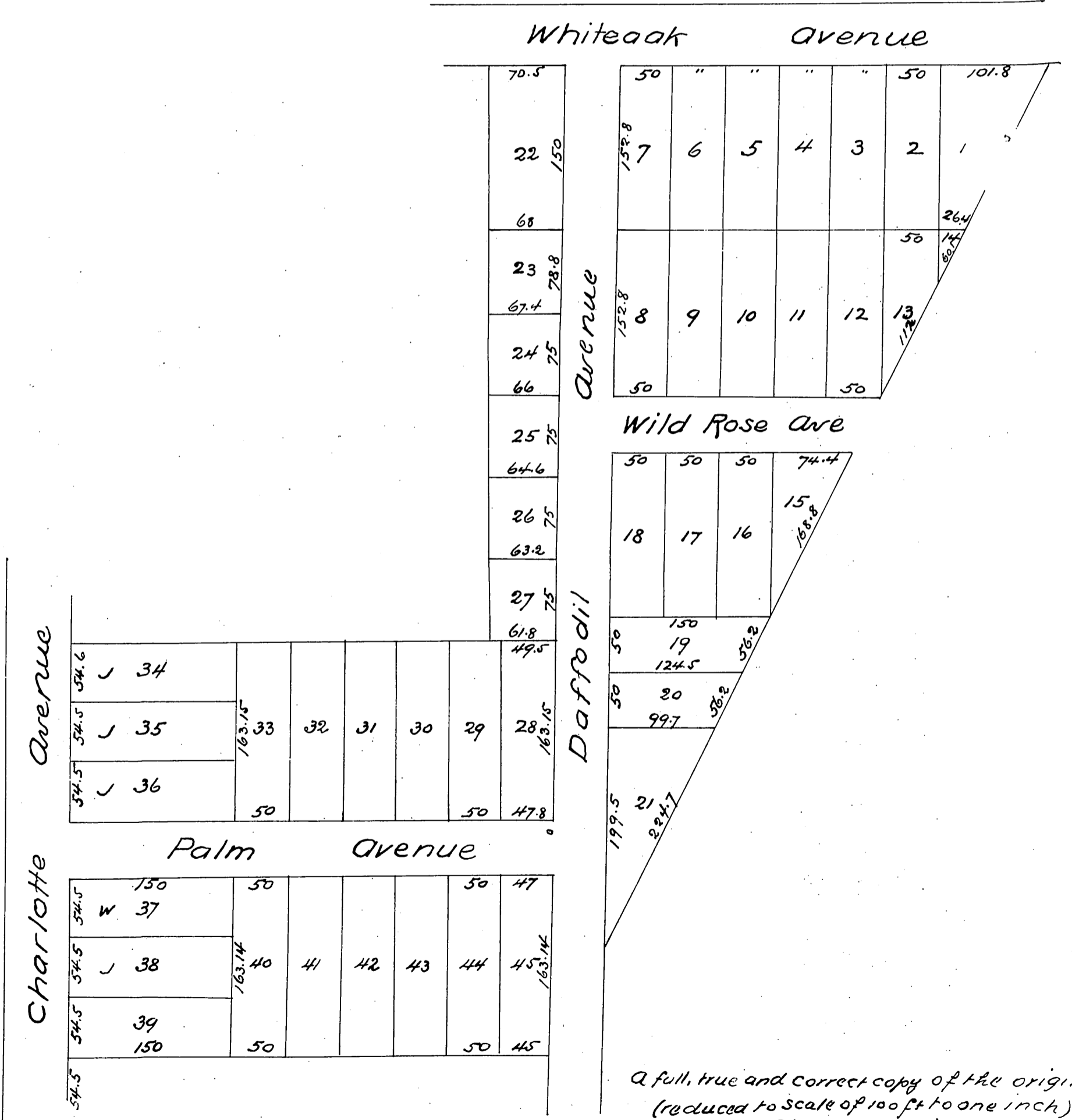


# MAP OF Grand View Subdivision

of Lots a and c Block I Monrovia Tract  
Monrovia, Los Angeles Co Cal  
Scale 1 inch = 80 ft  
Feb'y 1887



A full, true and correct copy of the original  
(reduced to scale of 100 ft to one inch)  
recorded Feb 26, 1887 at 25 min past 8 a m  
at request of C. A Campbell  
Frank A. Gibson County Recorder  
By Leo Bugbe Deputy.