



Wotkyns Subdivision

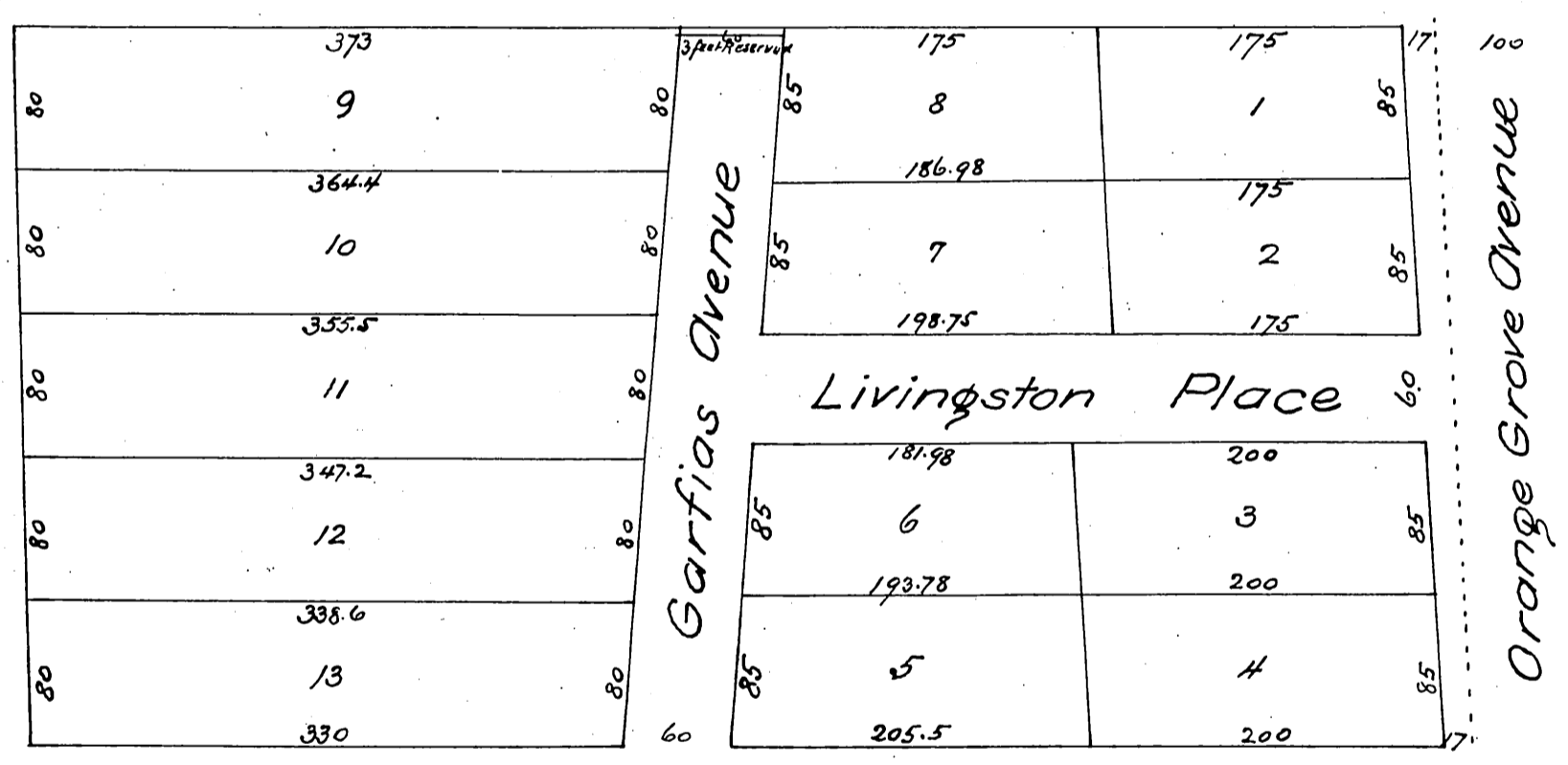
of a portion of the I B Clapp Homestead

Division E, S.G.O.G association

Rancho San Pasqual, Pasadena Cal

Surveyed Nov. 19th 1886 by J.M. Willard C.E.

Scale 50ft 1 inch



A full, true and correct copy of the original
(reduced to the scale of 100 feet to one inch)
recorded Feb 26. 1887 at 29 min past 2 p.m.
at request of B M. Wotkyns
Frank A. Gibson County Recorder
By Leo Bugbe Deputy