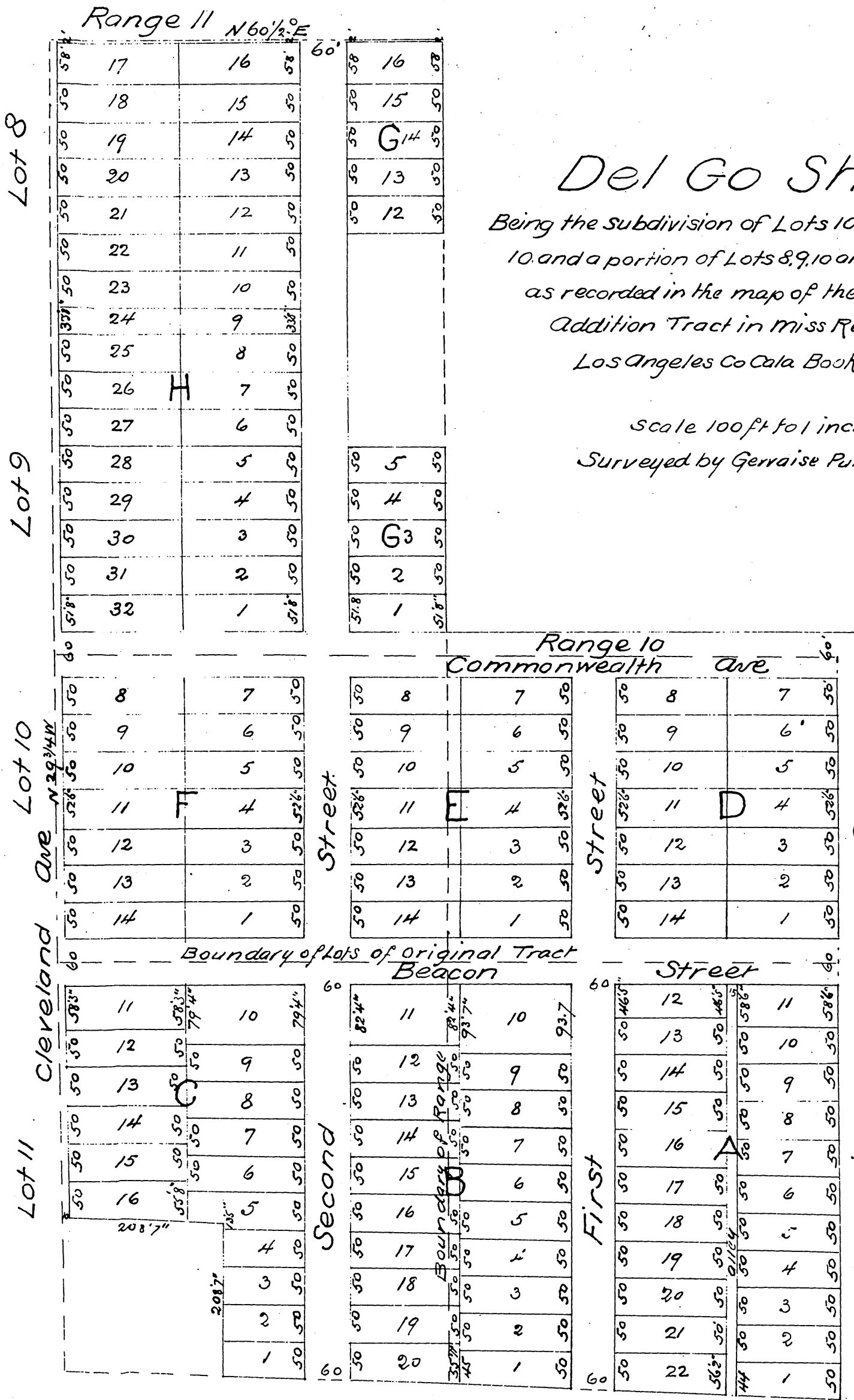
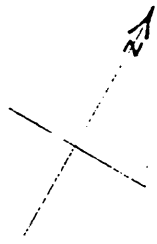


#446



Del Go Shar

Being the subdivision of Lots 10 and 11 Range 10 and a portion of Lots 8, 9, 10 and 11 Range 11 as recorded in the map of the Alhambra Addition Tract in Miss Records of Los Angeles Co Cala Book 3 page 299

Scale 100ft to 1 inch
 Surveyed by Gervaise Purcell C.E.

A full, true and correct copy of the original (reduced to the scale of 150 feet to one inch) recorded Feb 28 1887 at 40 min past 2 P.M. at request of G.M. Adams & T.J. Stewart
 Frank A. Gibson County Recorder
 By Geo. Bungee Deputy