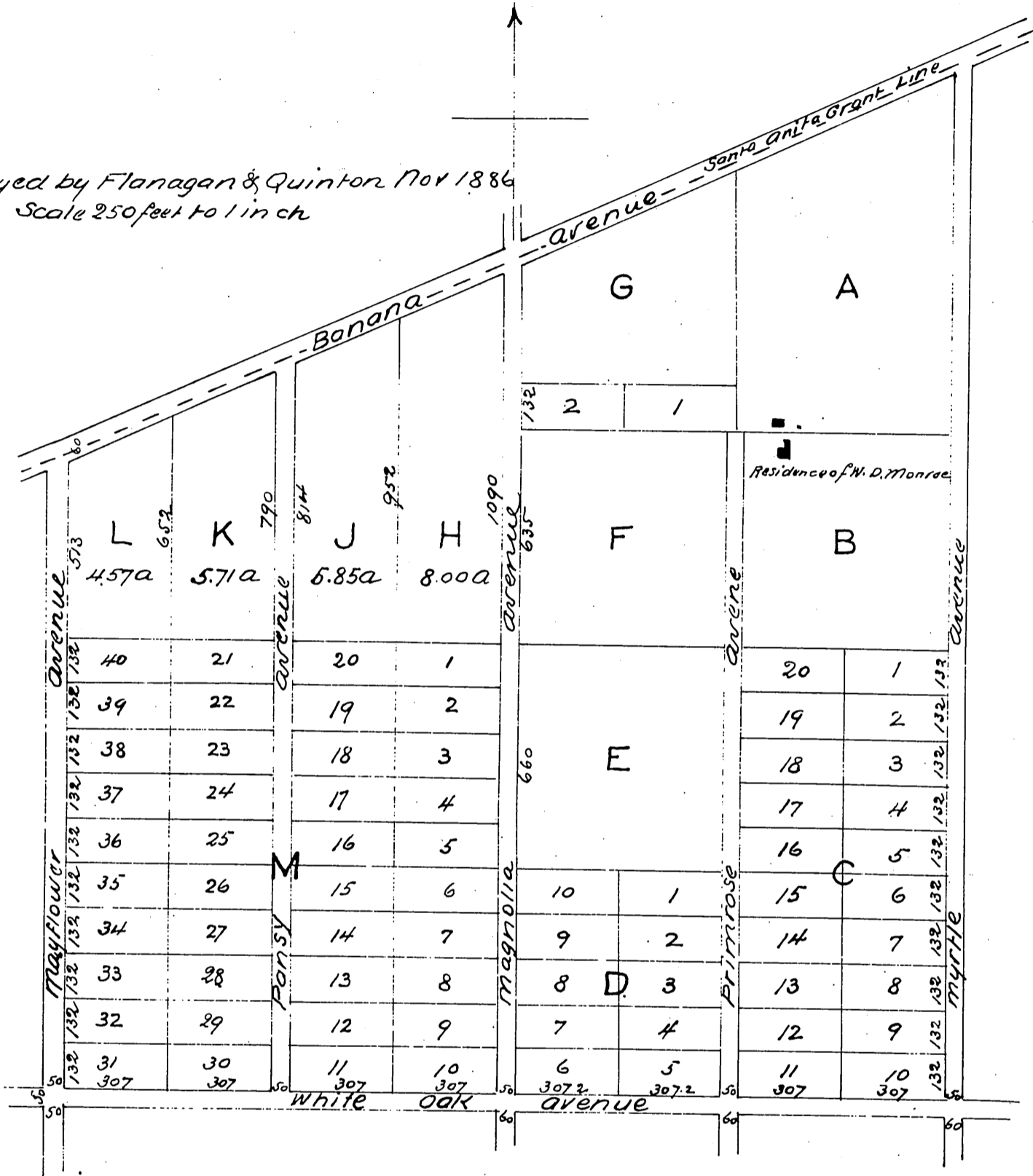


MAP OF Monroe Addition TO Monrovia Tract Los Angeles Cal.

Surveyed by Flanagan & Quinter Nov 1886
Scale 250 feet to 1 in ch



A full, true and correct copy of the original
(reduced to the scale of 400 feet to one inch)
recorded March 1 1887 at 11 a m at request
of W. n. Monroe

Frank A Gibson County Recorder
By Geo Bugbe Deputy

Appendix to W. n. Monroe's addition to the Town of Monrovia re-
corded in Book 14 Page 69 Miscellaneous Records of Los Angeles County
That Pansey Avenue in the above mentioned Addition is changed
to "J. I. C" Avenue

W. n. Monroe