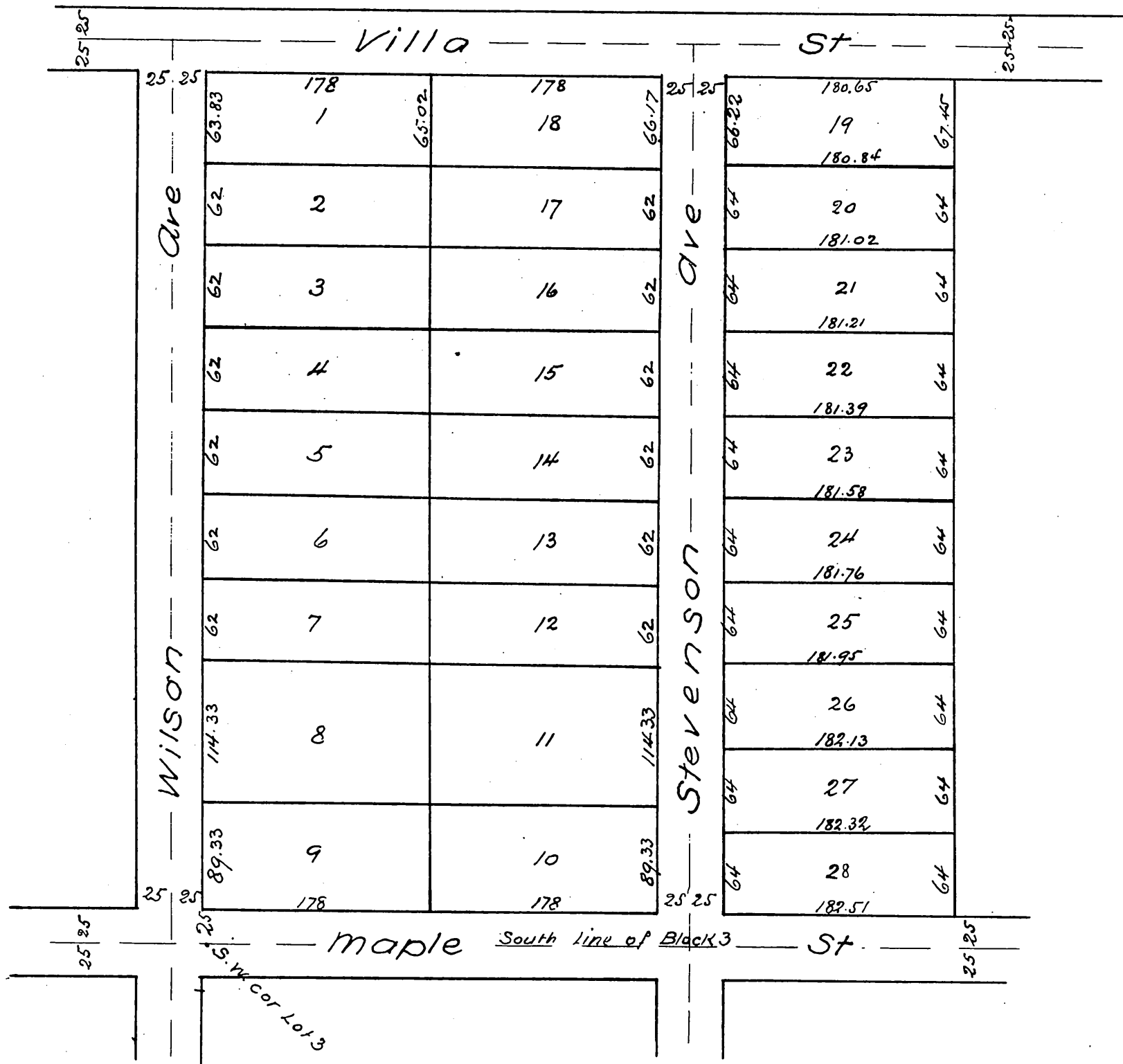


MAP OF C.C. Browns Subdivision

of Lots 1, 2 & 3 Block G of the lands of the
Mutual Orchard Co San Pasqual Tract
Pasadena, Los Angeles Co Calif.

Surveyed Jan 1887 by J.M. Willard C.E.

Scale 100ft = 1 in



A full, true and correct copy of the original
recorded March 1, 1887 at 15 min past 12 m
at request of C.C. Brown

Frank A. Gibson County Recorder
By Geo Bugle Deputy.