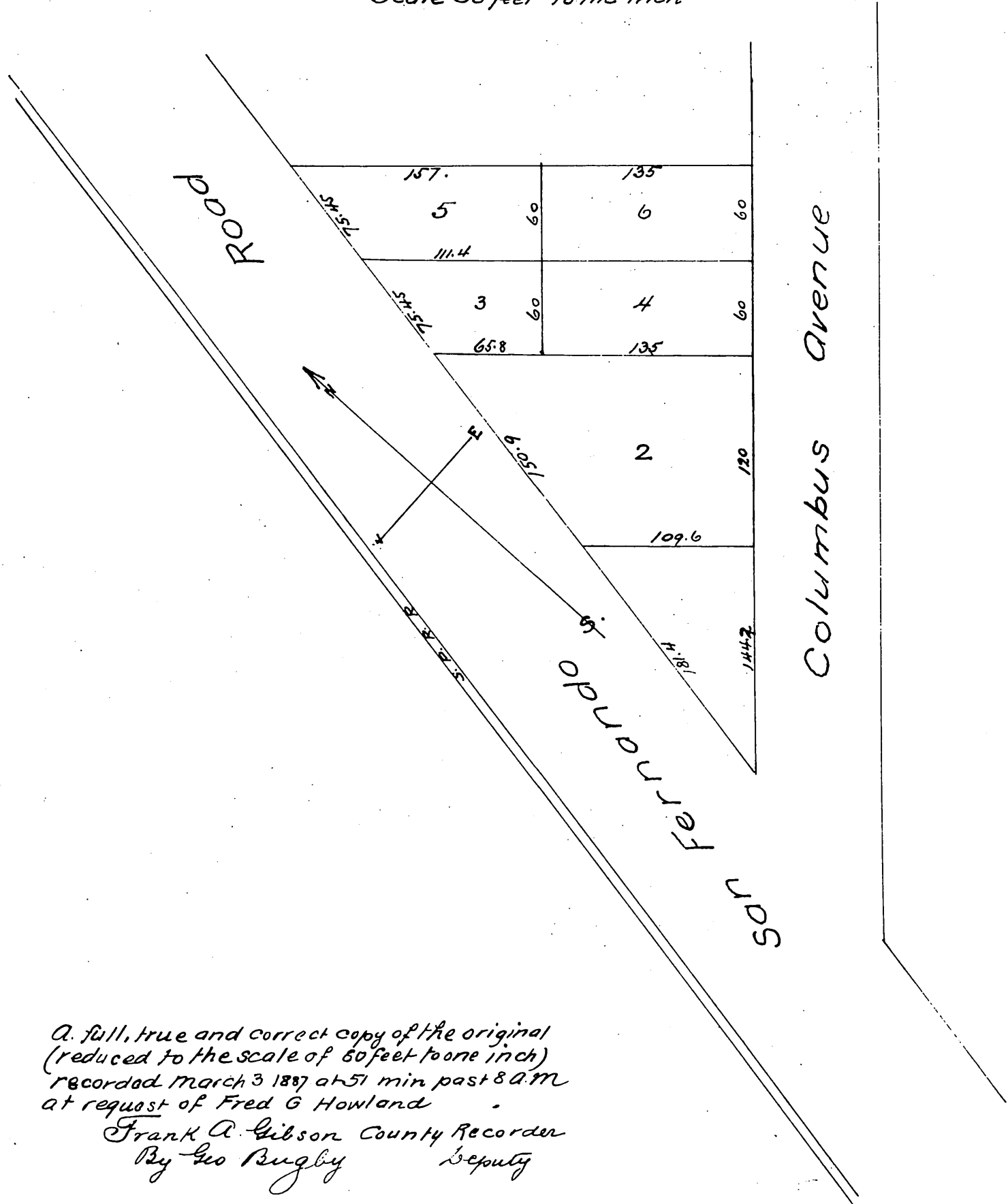


MAP  
OF  
Howland's Subdivision  
Being Lot No 61 of the Jeffries Tract  
East Los Angeles  
Subdivided Feb 19 1887 by John Goldsworthy County Surveyor  
Scale 30 feet to the inch



A full, true and correct copy of the original  
(reduced to the scale of 60 feet to one inch)  
recorded March 3 1887 at 51 min past 8 A.M.  
at request of Fred G Howland  
Frank A. Gibson County Recorder  
By Geo Bugby Deputy