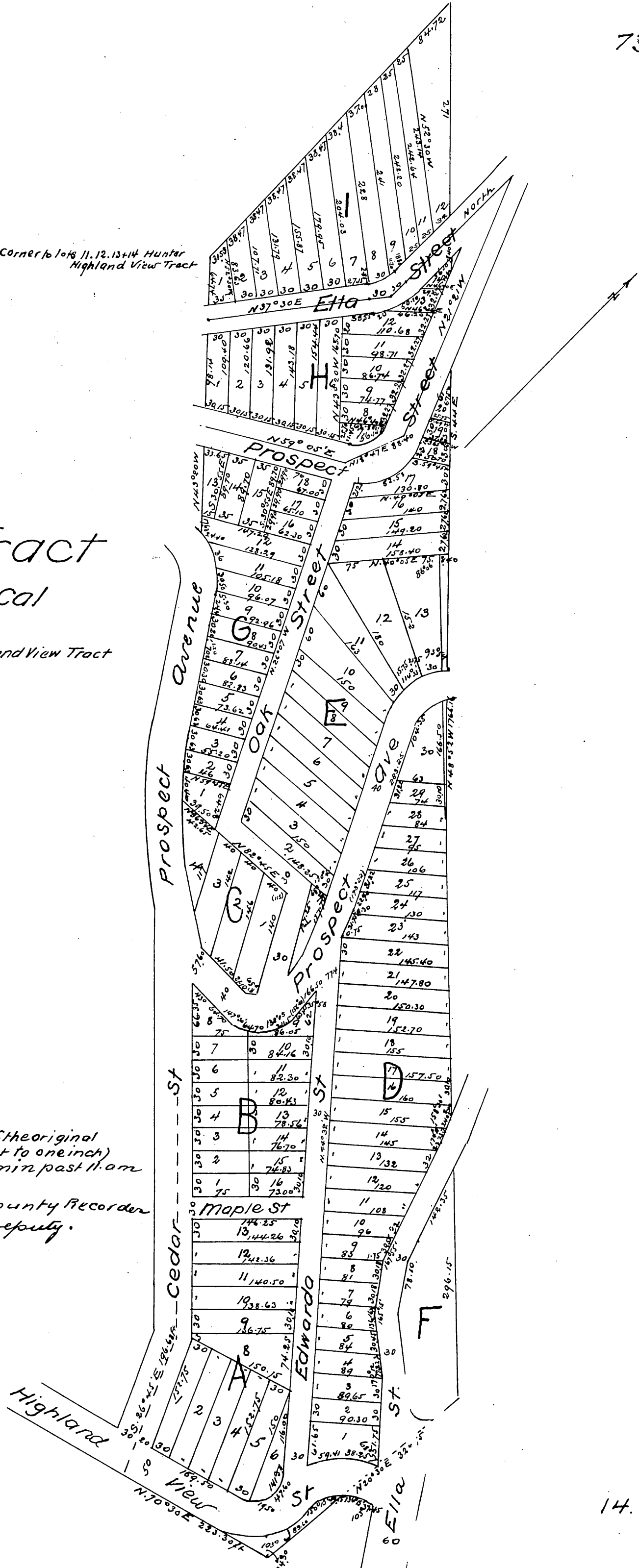


M.R.

Corner to lots 11, 12, 13 & 14 Hunter Highland View Tract

MAP OF THE Norton Tract Los Angeles Cal

Being part of Lot 14 Hunter Highland View Tract
Scale 1" = 60 ft



A full true and correct copy of the original
 (reduced to the scale of 120 feet to one inch)
 recorded March 4, 1887 at 32 min past 11 am
 at request of W. R. Norton
 Frank A. Gibson County Recorder
 By Geo Bugbee Deputy.