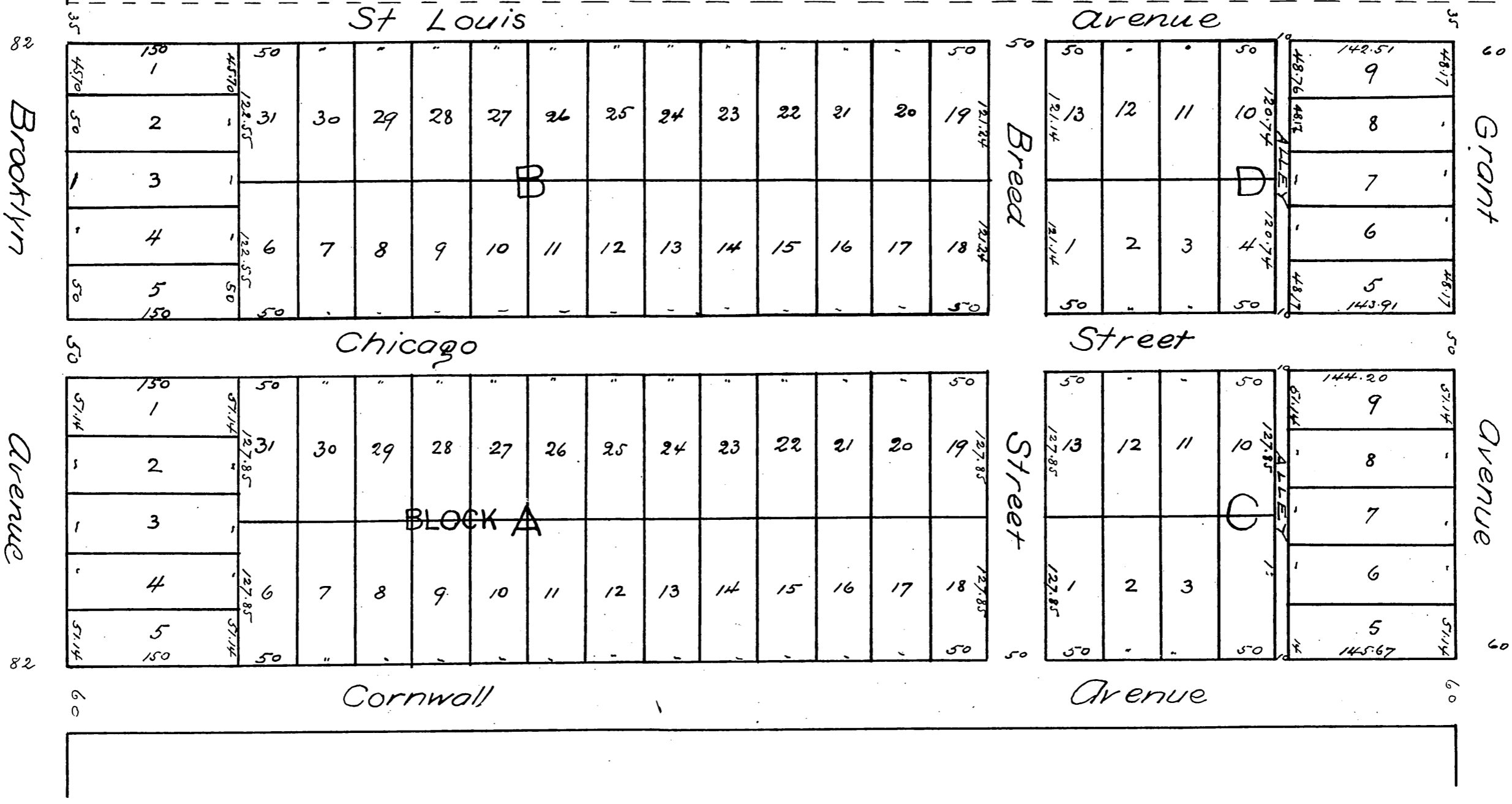


# Bird Tract

Being the westerly half of Lot 6  
Block 61 Hancock's Survey

Surveyed by Fred Eaton C.E. in December 1886



A full true and correct copy of the original (reduced from a scale of 50 feet to one inch to a scale of 100 feet to one inch) recorded March 5<sup>th</sup> 1887 at 32 min past 2 P.M. at request of Los Angeles Land Bureau.  
Frank A. Gibson County Recorder  
By Geo. Bugbee Deputy