

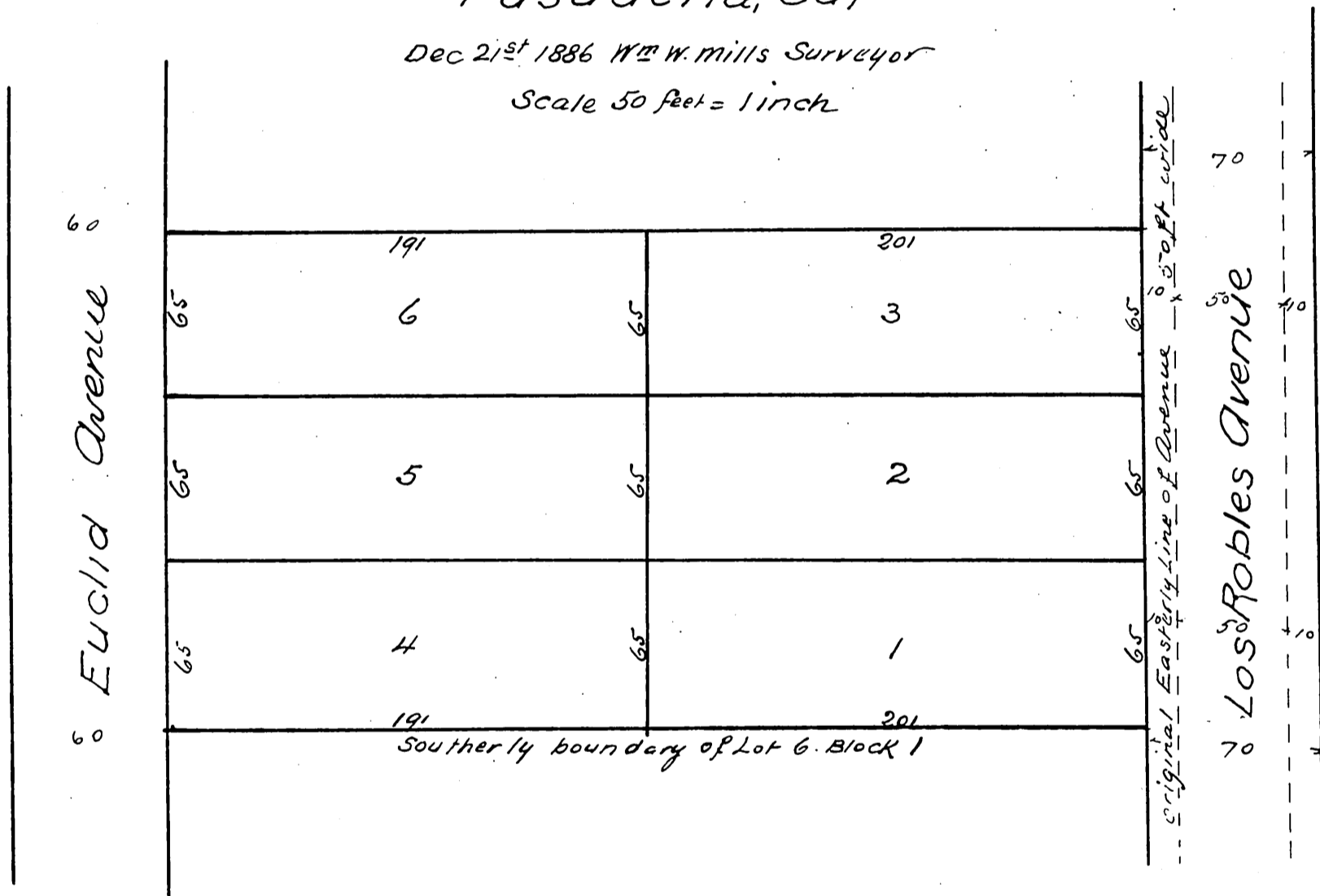
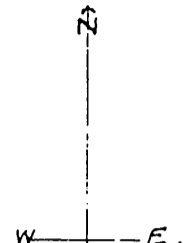
# Bennett's Subdivision

of part of 2<sup>1</sup>/<sub>2</sub> Acres in Lot N<sup>o</sup> 6 in Block I,  
San Posqual Tract described in deed  
recorded March 1<sup>st</sup> 1884 in Book 119 Page 267 Records Los Angeles Co Cal.

Pasadena, Cal

Dec 21<sup>st</sup> 1886 W<sup>m</sup> W. Mills Surveyor

Scale 50 feet = 1 inch



A full, true and correct copy of the original  
recorded March 7, 1887 at 20 min past 9 A.M.  
at request of B. D. Bennett

Frank A. Gibson County Recorder

By Geo Bugbee Deputy