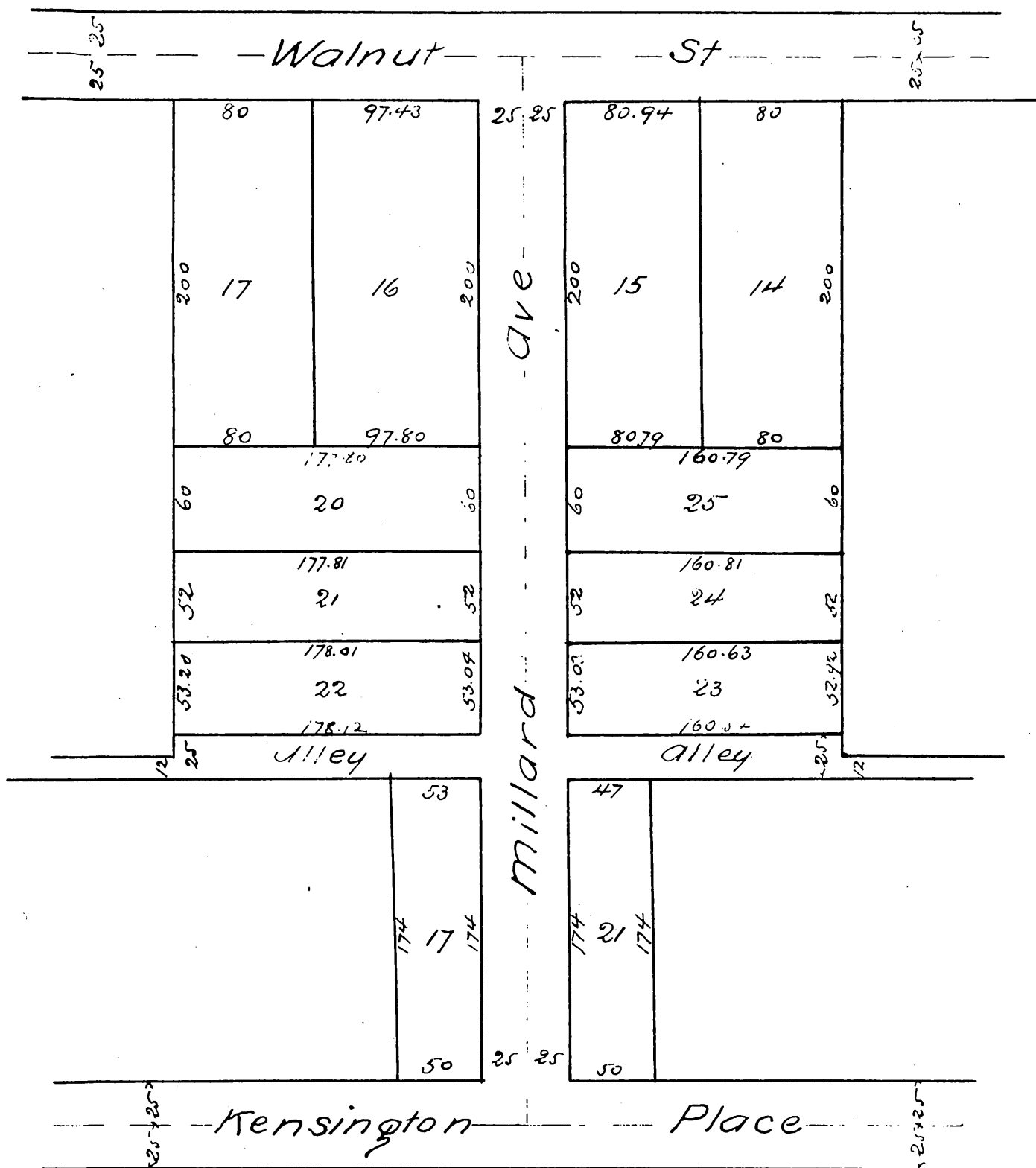


# MAP OF Millard's Subdivision

of Lots 14, 15, 16 & 17 of Millard's Subdivision  
of part of Lands marked Vauter Div. B. O. of the  
Lands of San Gabriel Orange Grove Association  
Pasadena, Los Angeles Co. Cal.  
Surveyed Dec 1886 by J. M. Willard C.E.  
Scale 60 ft to 1 in



a full true and correct copy of the original (reduced to the scale  
of 80 feet to one inch) recorded March 7, 1887 at 25 min past 9 a.m.  
at request of E. Millard

Frank A. Gibson County Recorder  
By Geo Bugbe Deputy.