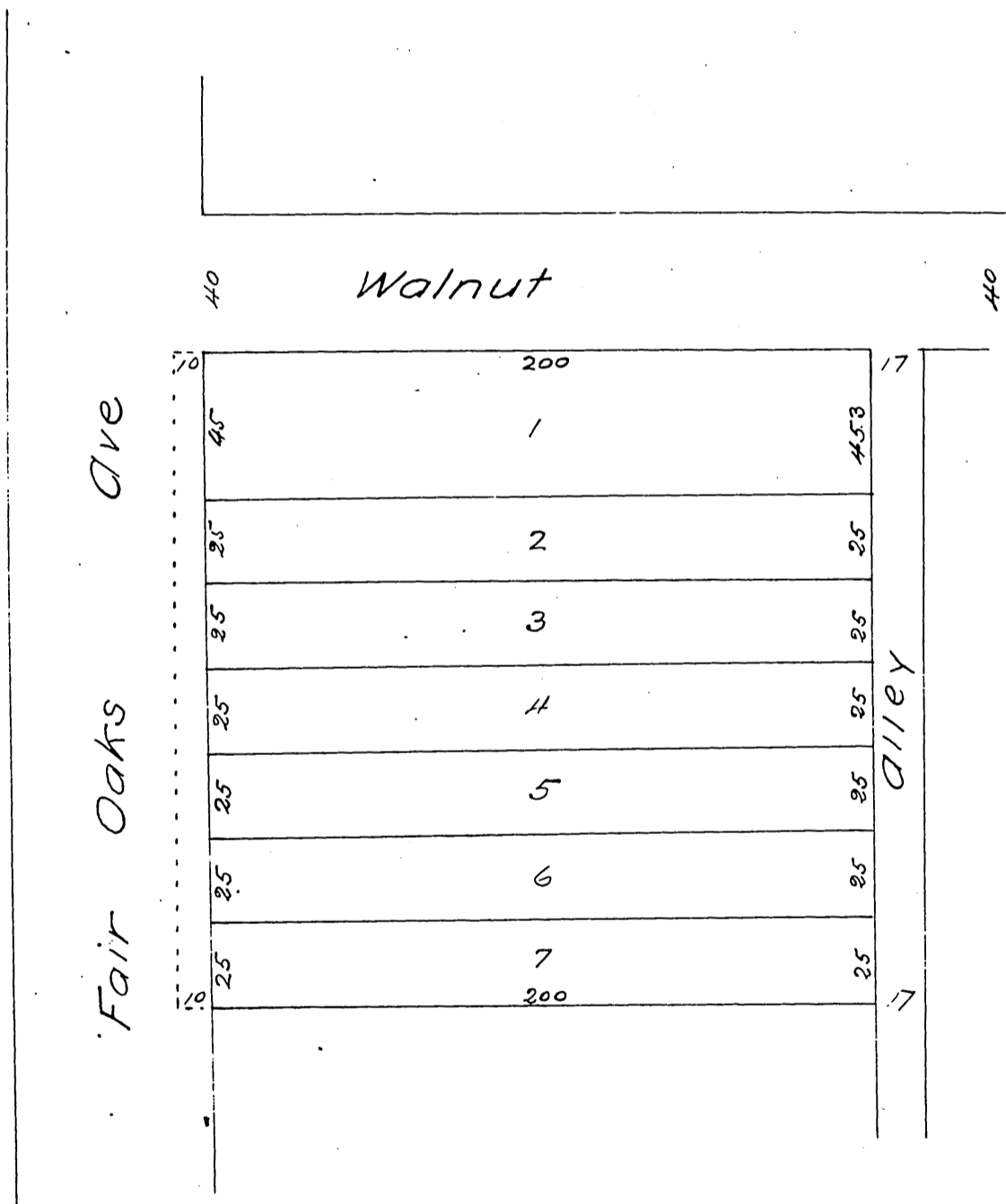


MAP  
 OF  
 Sumstines Subdivision  
 of lots 10, 11, 12 and 13 Blk A of the Legge Tract  
 Lots 10 and 11 Block B San Pasqual Tract  
 Pasadena, Cal  
 Surveyed March 1887 by —  
 Scale 50 ft to one inch



A full, true and correct copy of the original  
 recorded March 7, 1887 at request of Jos. H  
 Cambell at 35 min past 11 a.m.

Frank A. Gibson County Recorder  
 By Geo Bugby Deputy