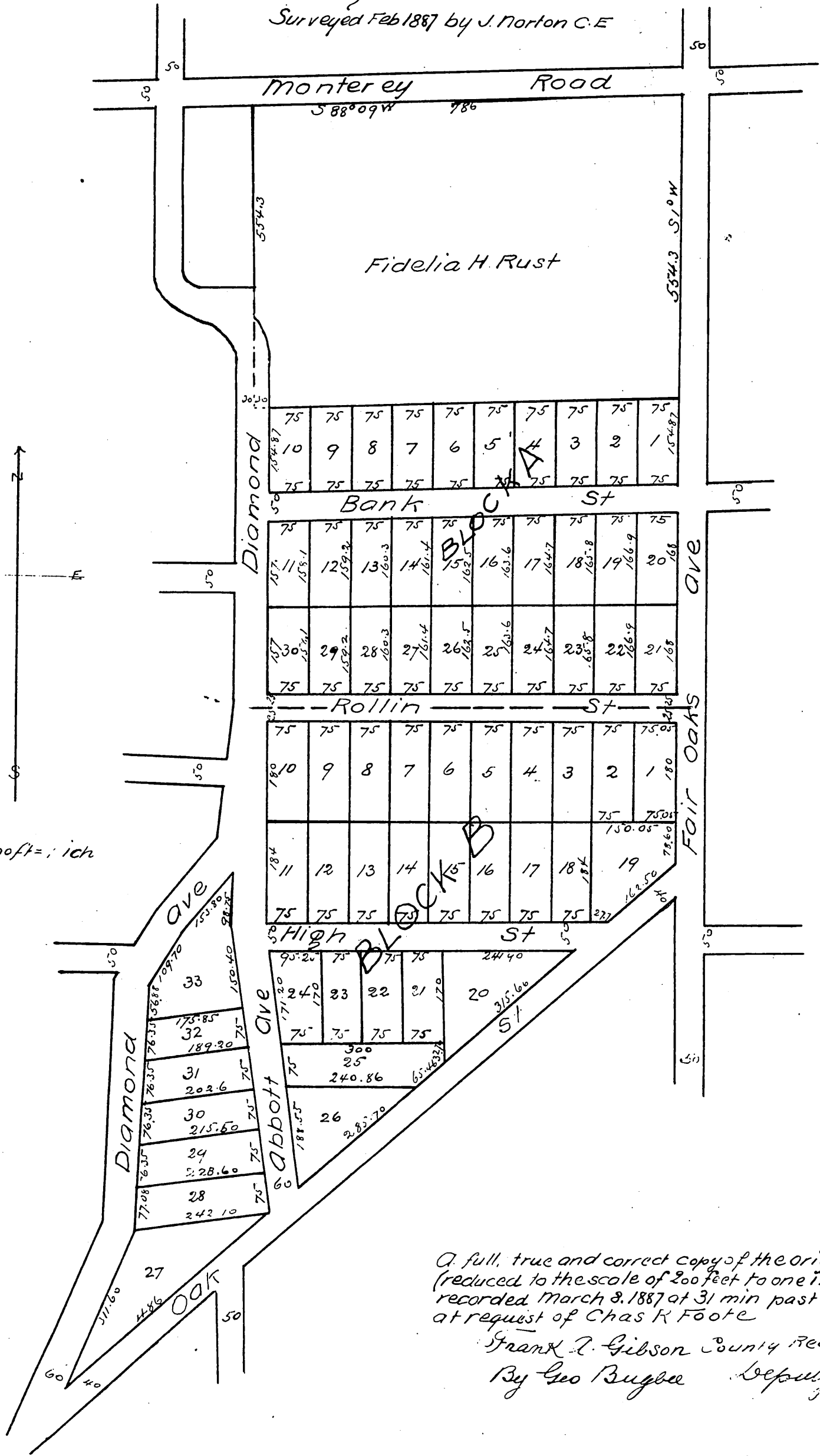


MAP OF Foote's Addition TO South Pasadena

Being a part of Division K of the lands of the San Gabriel Orange Grove Assn.
Block A owned by Charles R Foote. Block B by Mary H &
Catherin L. Foote

Los Angeles Co California
Surveyed Feb 1887 by J. Norton C.E



A full, true and correct copy of the original
(reduced to the scale of 200 feet to one inch)
recorded March 8, 1887 at 31 min past 9 am
at request of Chas R Foote
Frank A. Gibson County Recorder
By Geo Bugbee Deputy