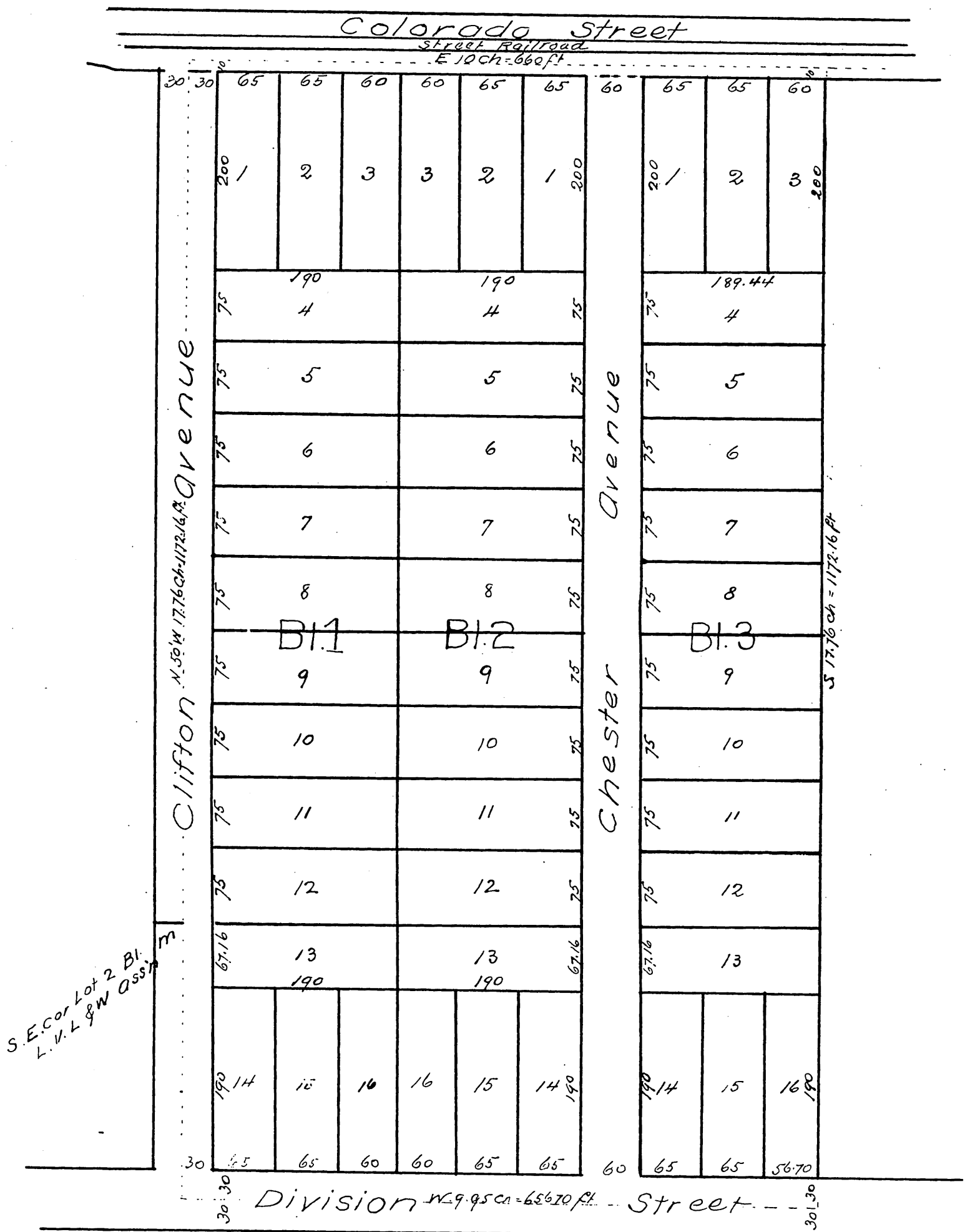




Amended
MAP
 OF THE
Chester Tract

Situated in the Southwestern part of the Grogan Tract
 Pasadena Los Angeles Co Cal

P. Gano Del.



A full true and correct copy of the original (reduced from the scale of 100 to 120 feet to one inch) recorded March 8, 1887 at 14:30 p.m. at request of P. Gano

Frank A. Gibbs County Recorder.
 By: Geo. Bungee Deputy.