

MAP  
 OF THE  
 Vosburg Tract  
 Surveyed by John E Jackson  
 Jan 1887

Residence of Q. Kinney

Sec 12

Sec 13

Sec 18

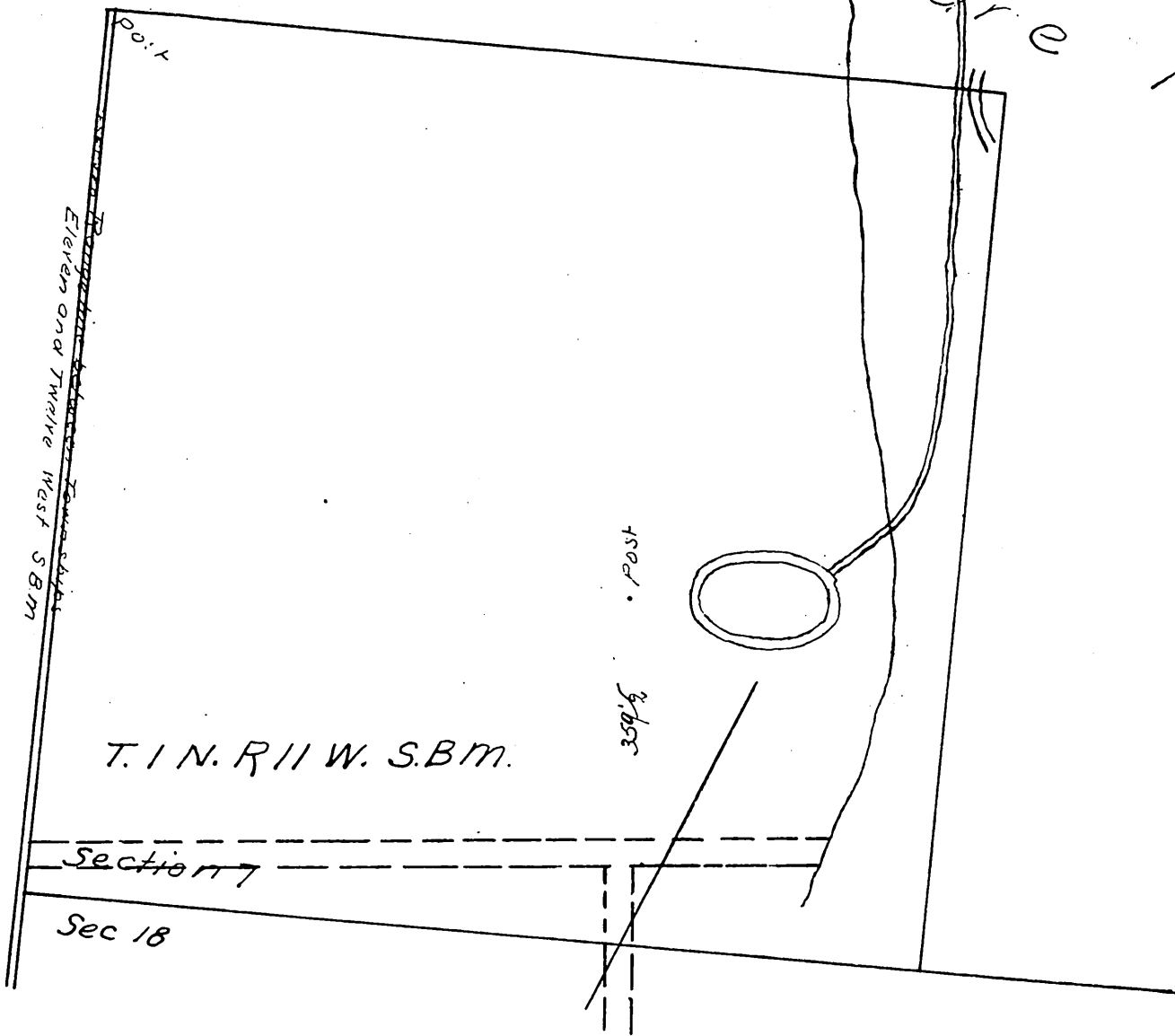
T. 1 N. R. 11 W. S. 31 M.

Point of Division of  
 Water

Sierra

Madre

Mounts

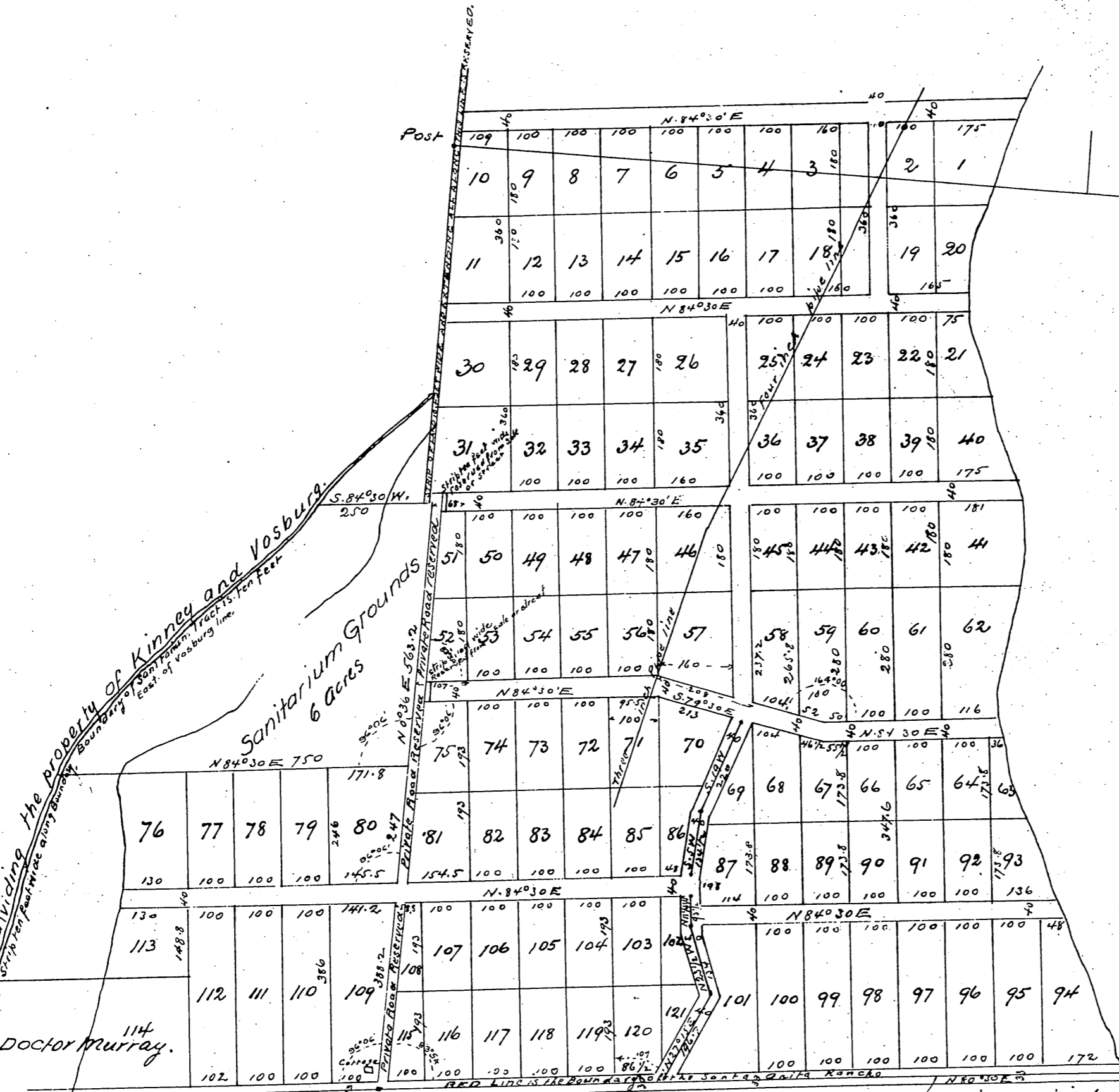


74085

85

Abbott Kinney

Arroyo dividing the property of Kinney and Vosburg.  
Sanitarium Grounds 6 acres  
Doctor Murray.



Davis Cañon

Hostings Estate

Distances are in feet and decimals  
Scale one hundred and fifty feet to one inch  
True courses Variation of magnetic needle  
is 14°45' East Surveyed in January 1887 by me  
John E Jackson

Sierra Madra Villa

A full, true and correct copy of the original (reduced to 1/250 scale of 250 feet to one inch) recorded March 8, 1887 at 11:20 A.M. at request of J. S. Vosburg

Frank A. Gibson County Recorder  
By Geo. Rugbee Deputy.

Whiting

Intersection of Range line with north boundary of Rancho Santa Ana  
Doctor Murray