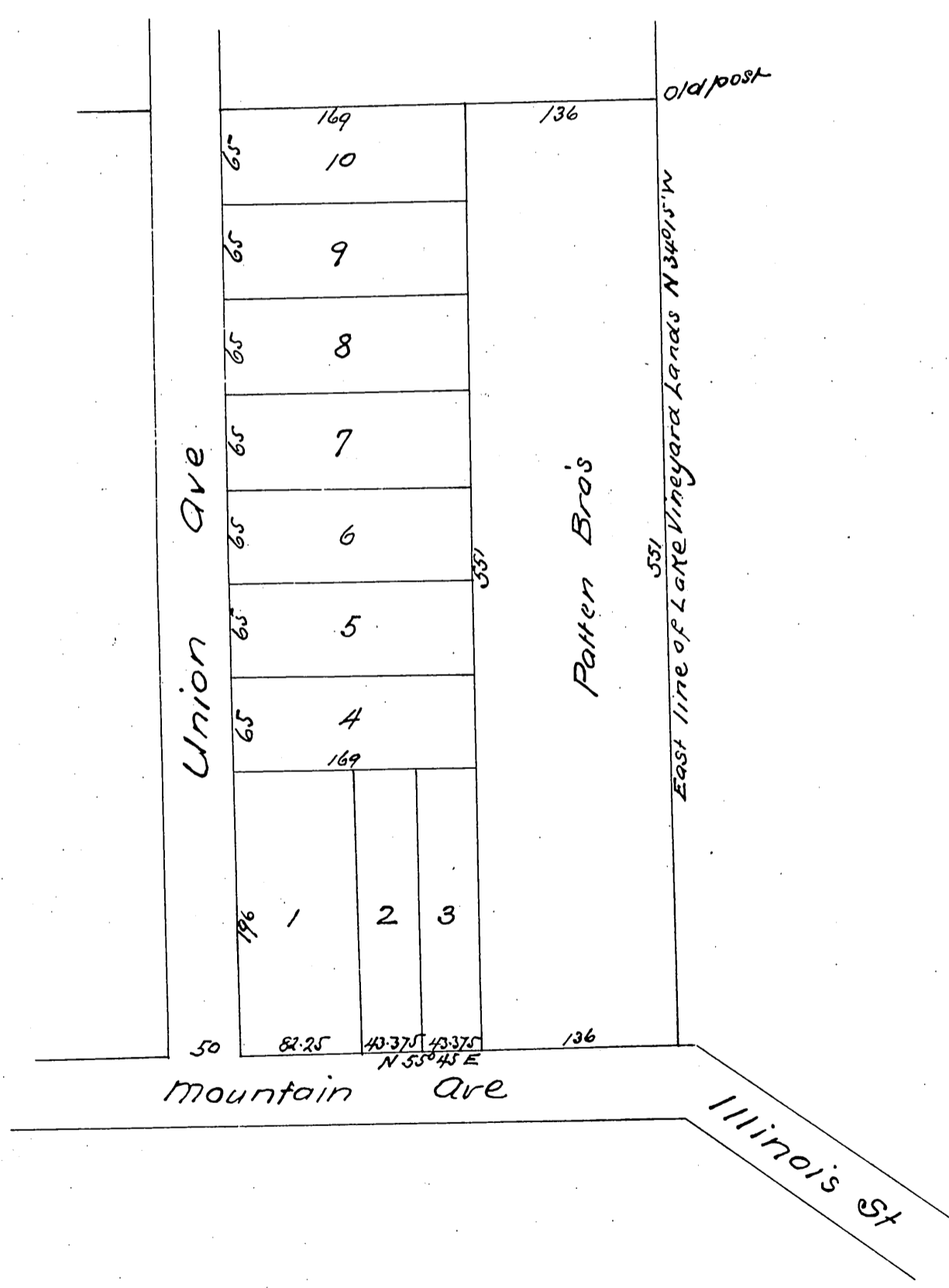


MAP  
 OF  
 Allin & Halsey's Subdivision  
 IN  
 Pasadena Cal  
 W Thomson Sur  
 100ft = 1 in



a full true and correct copy of the original  
 recorded March 8, 1887 at 25 min past 2 P.M.  
 at request of John Allin  
 Frank A. Gibson County Recorder  
 By Geo. Bugbee Deputy