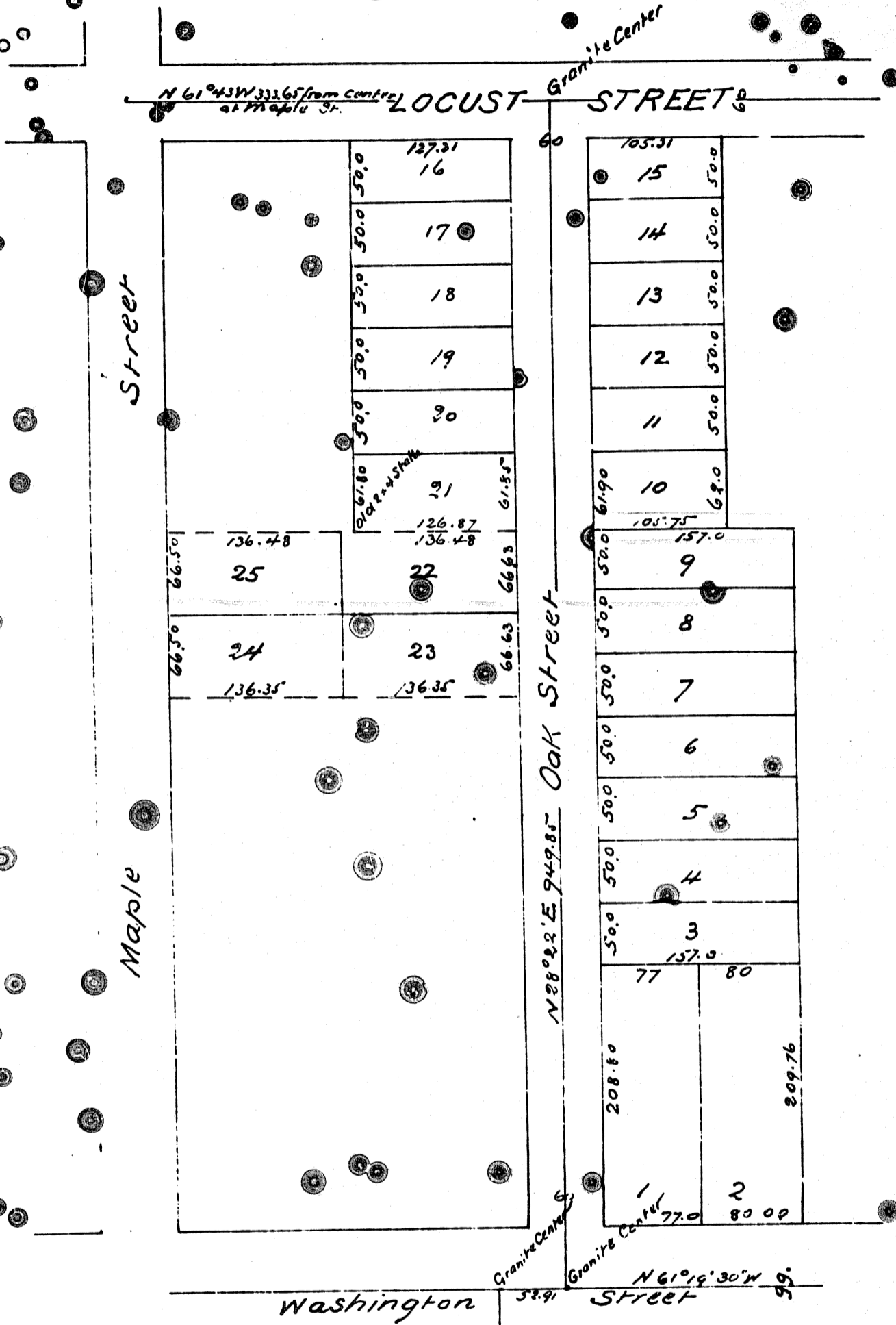


Daly Tract

Being a subdivision of a part of the Pierce Tract
in Lot 2 Block 17 of Hancock's Survey
Los Angeles City California

recorded at the request of J.C. Daly March 1887



a full true and correct copy of the original (reduced to the scale of 100 feet to 1 inch) recorded March 10 1887 at 50 min past 12 M at request of J.C. Daly.

Frank A. Gibson - County Recorder
by Geo. Bugbee Deputy