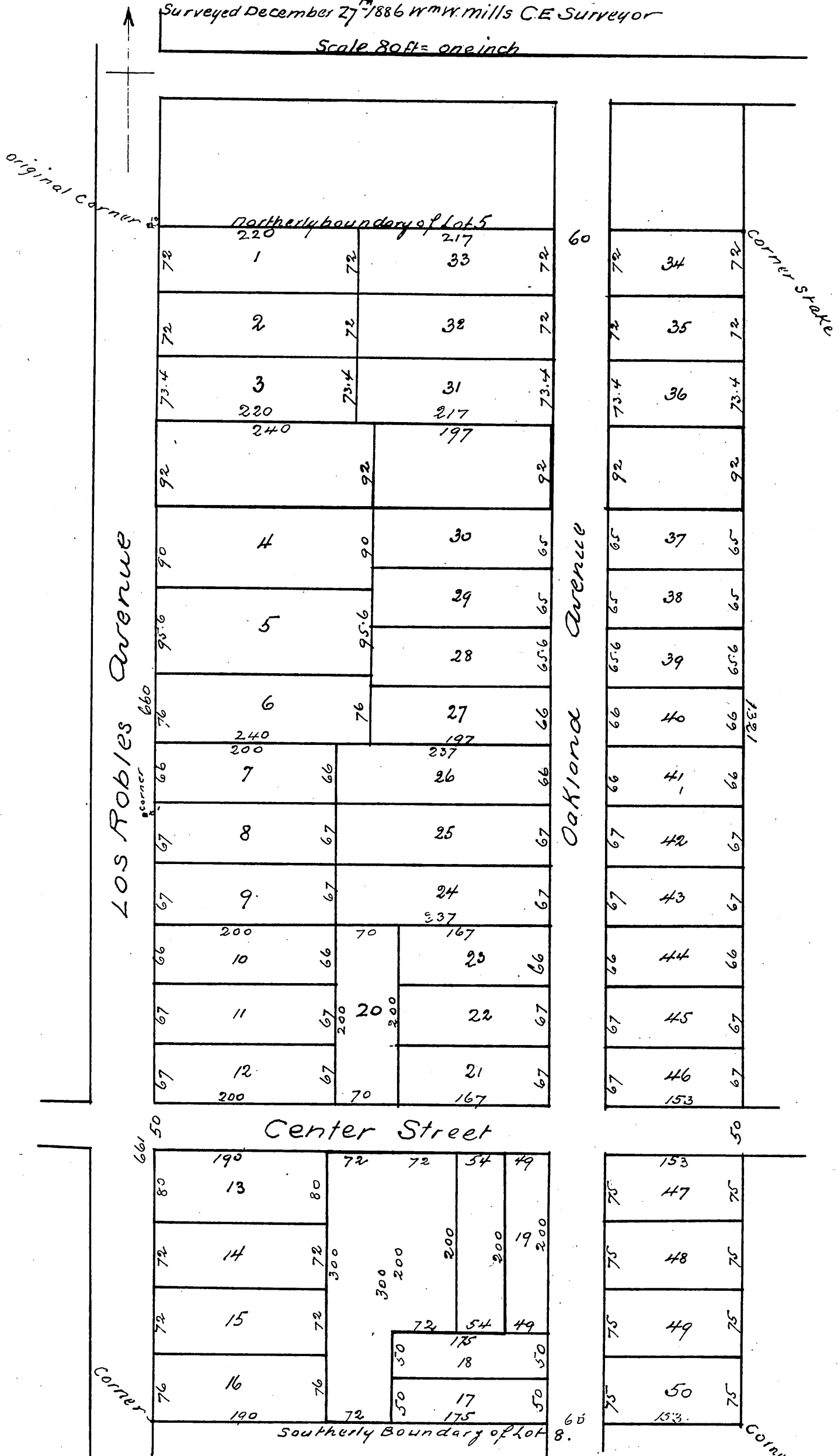


# Bixby Tract

Being a subdivision of Lot 5 Block J and a Replat of Lot 8  
Block J of the San Pasqual Tract except the portions colored green (heavy lines on this copy)  
City of Pasadena Cal

Surveyed December 27<sup>th</sup> 1886 Wm W. Mills C.E. Surveyor  
Scale 80ft = one inch



A full, true and correct copy of the original (reduced to the scale of 100 feet to one inch) recorded March 10, 1887 at 58 min past 1 p.m. at request of L. H. Bixby

Frank A. Gibson, County Recorder  
by Geo. Bugbee Deputy