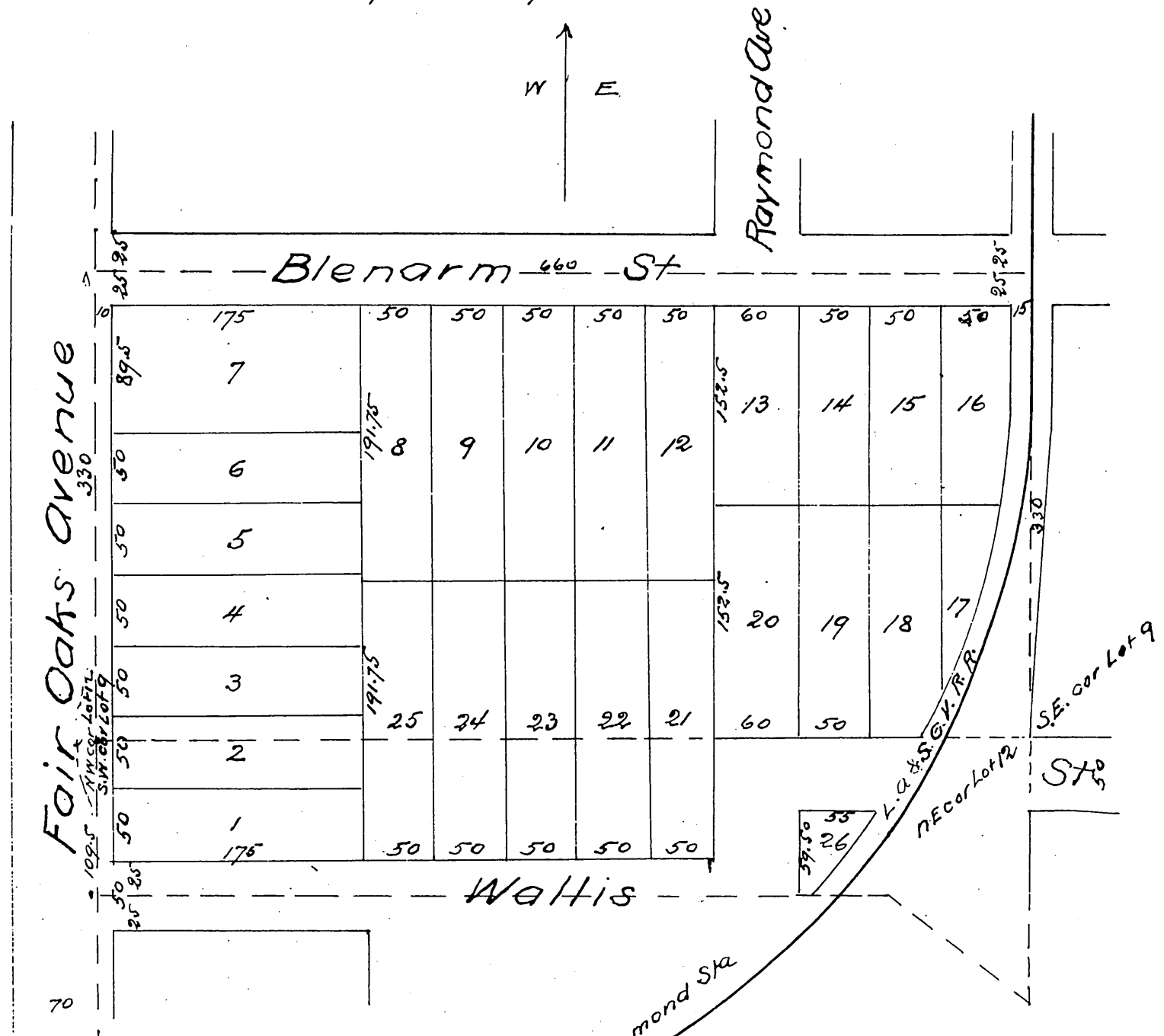


PLAT
OF
G.E. Smith's Subdivision
of the N. 109.5 ft of Lot 12 & the S 1/2 Lot 9 B1K N
L. V. L. & W Ass'n Lands.
Pasadena Cal.

W. Thompson Surveyor Scale 60ft = 1 inch



a full, true and correct copy of the original
(reduced to the scale of 100 feet to one inch) recorded
March 10, 1887 at 7 min past 2 p.m at request of
W. Thomson

Frank A Gibson County Recorder
By Geo. Bugbee Deputy.