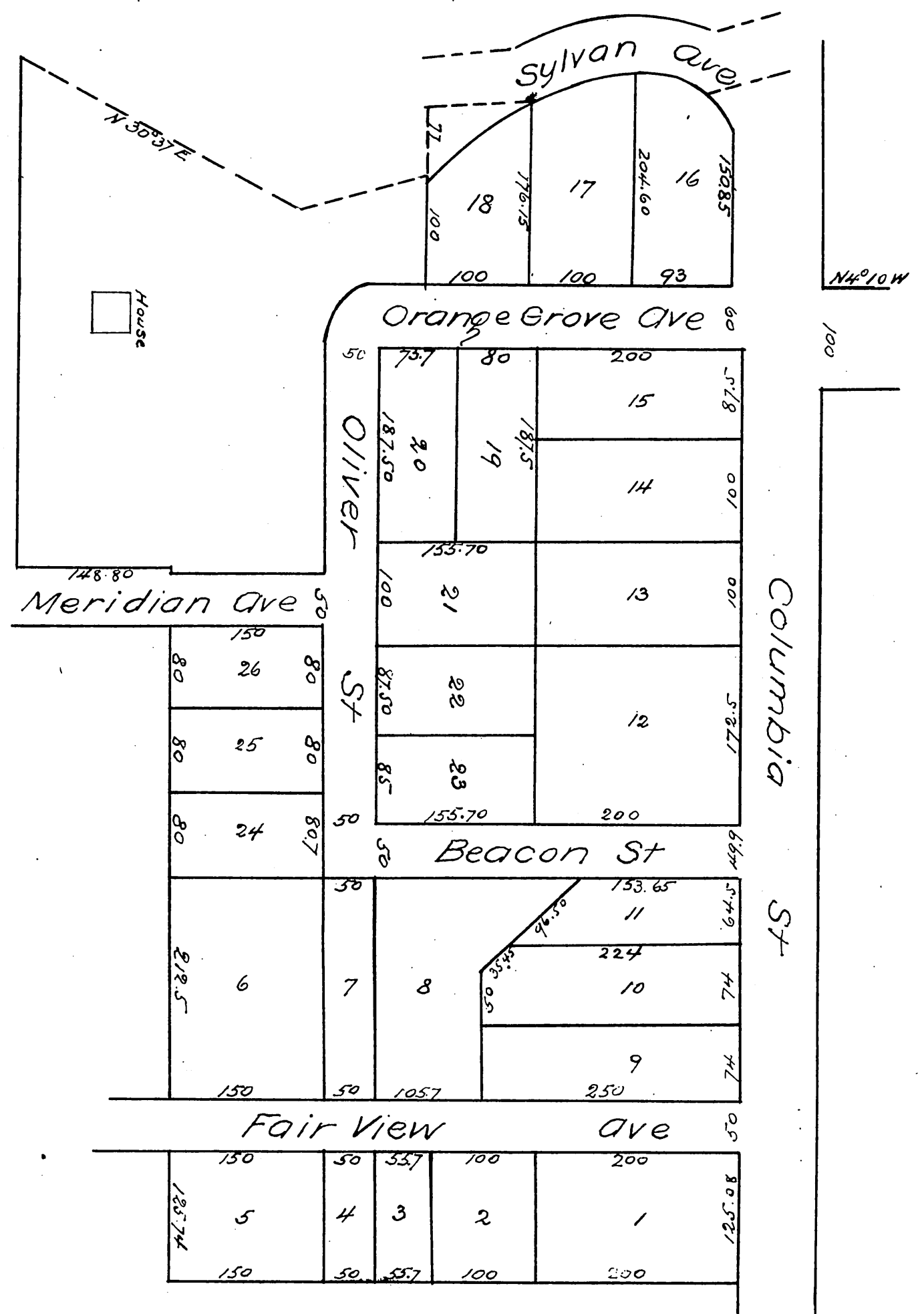


#149

MAP OF A. O. Porter's Subdivision

of a part of the Porter and Green Tract in Division G. Lands
of the San Gabriel Orange Grove Association
as per map of San Gabriel Orange Grove Association Lands
recorded in miscellaneous Records of Los Angeles County
California in Book 2, page 556
Los Angeles Co California
Surveyed by J. Norton C.E.
Scale 60ft/101in



A. Sull, true and correct copy of the original
(reduced to the scale of 120 feet to one inch) recorded March
11 1887, at request of A. O. Porter
Frank A. Gibson County Recorder.
By Geo Bugbee Deputy.