

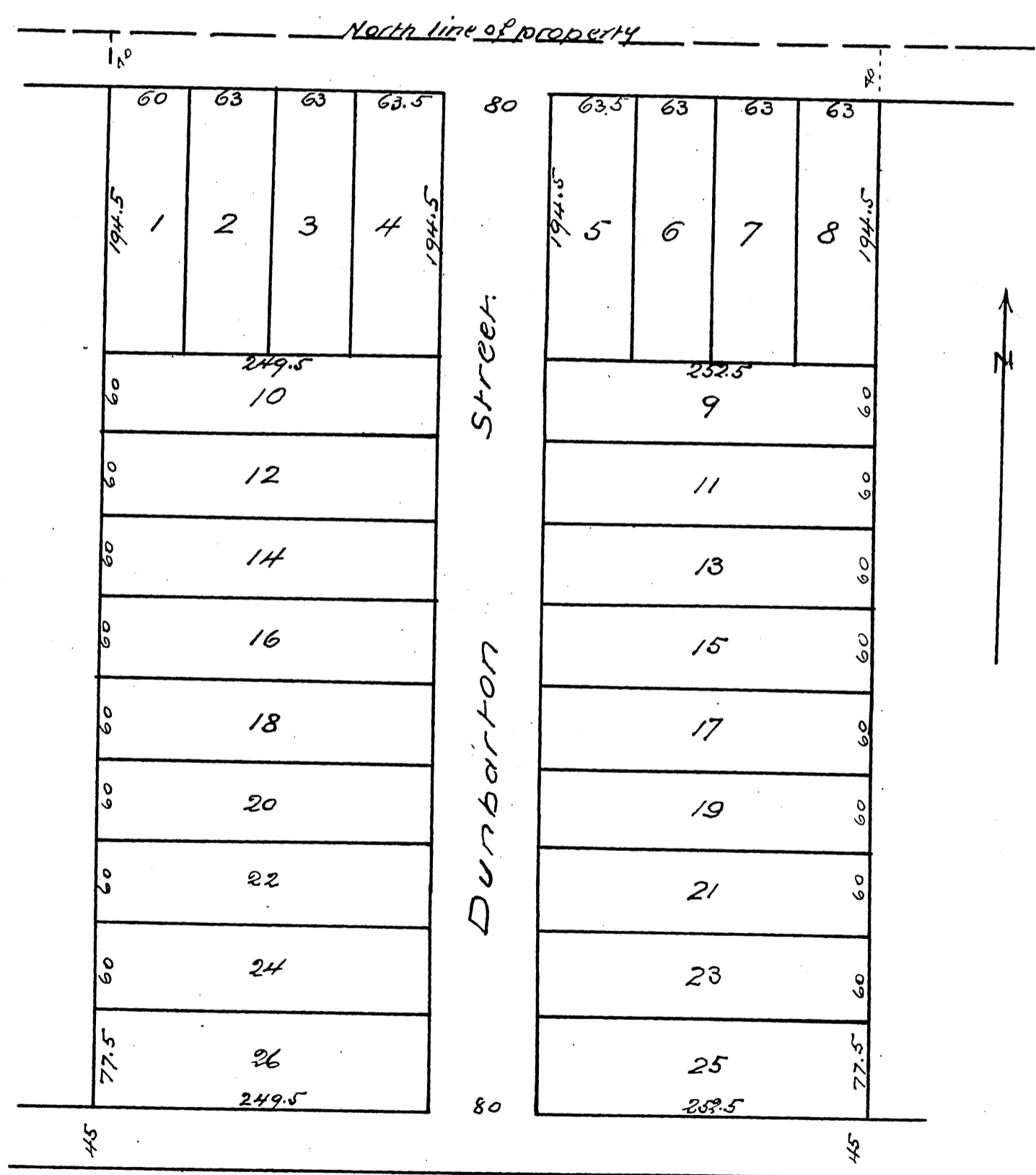
MAP

OF

Darracotts Subdivision

of the East 10⁵⁷/₁₀₀ acres of Lot 38 of the
Watts Subdivision of a part of the
Rancho San Rafael
as recorded in Book 5 pages 200 & 201 Min'n Records
of Los Angeles County

Surveyed March 1887 by Riggins & Phillips Surv's
Scale 60 ft to one inch



a full true and correct copy of the Original (reduced to the
Scale of 100 feet to one inch) Recorded March 12, 1887 at
13 Min past 2 P.M. at request of W. E. Darracott
Frank A. Gibson County Recorder
by Leo Bugbee Deputy