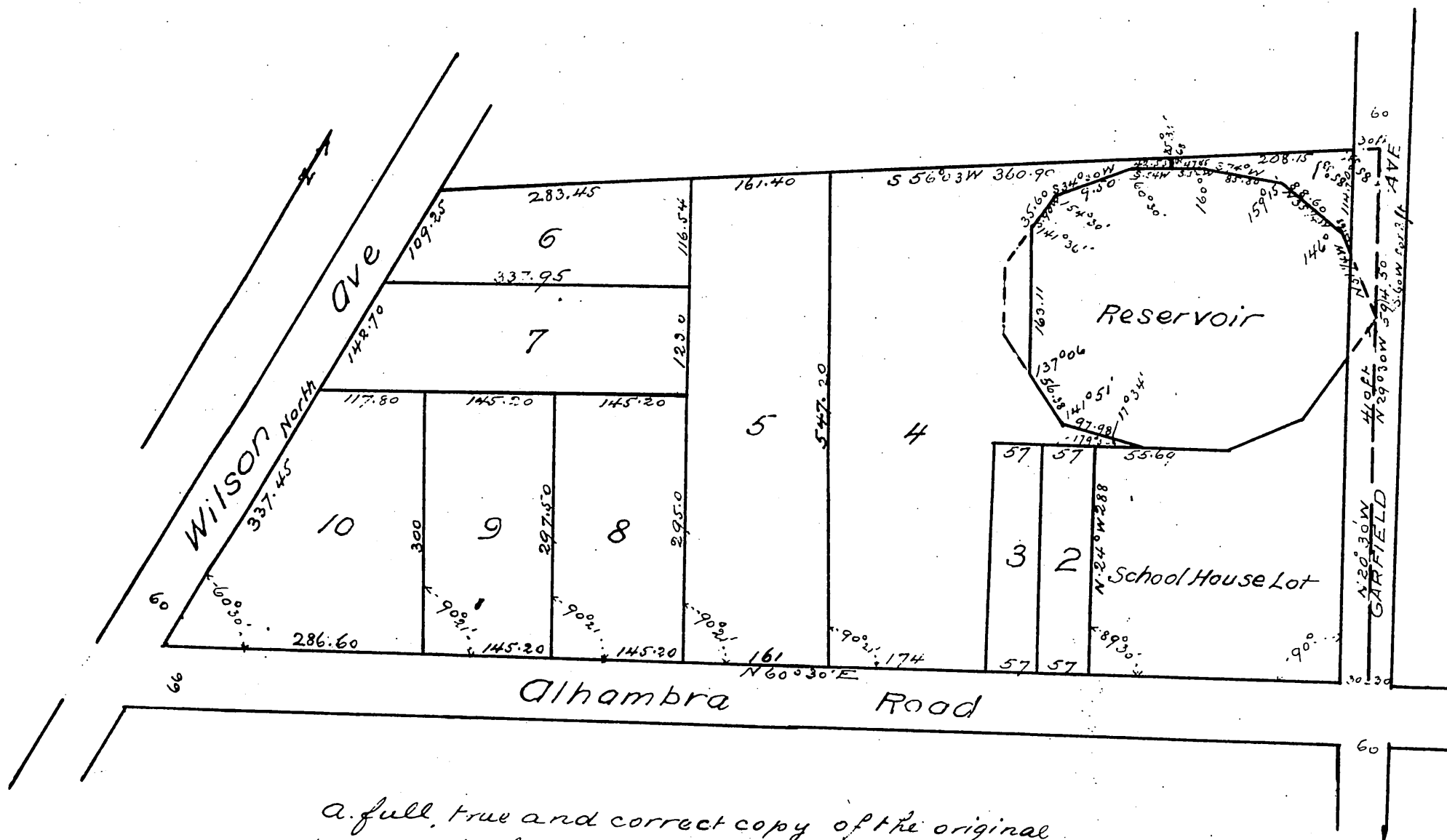


MAP OF Phillips Subdivision

of a part of the
Alhambra Addition Tract

Surveyed Jan 1887 by W. P. McClure C.E.

1 inch = 100 ft



A full, true and correct copy of the original
(reduced to the scale of 150 feet to one inch) recorded
March 12, 1887 at 29 min past 3 p.m. at request
of A Phillips
Frank A Gibson County Recorder
By Geo Bugbee Deputy