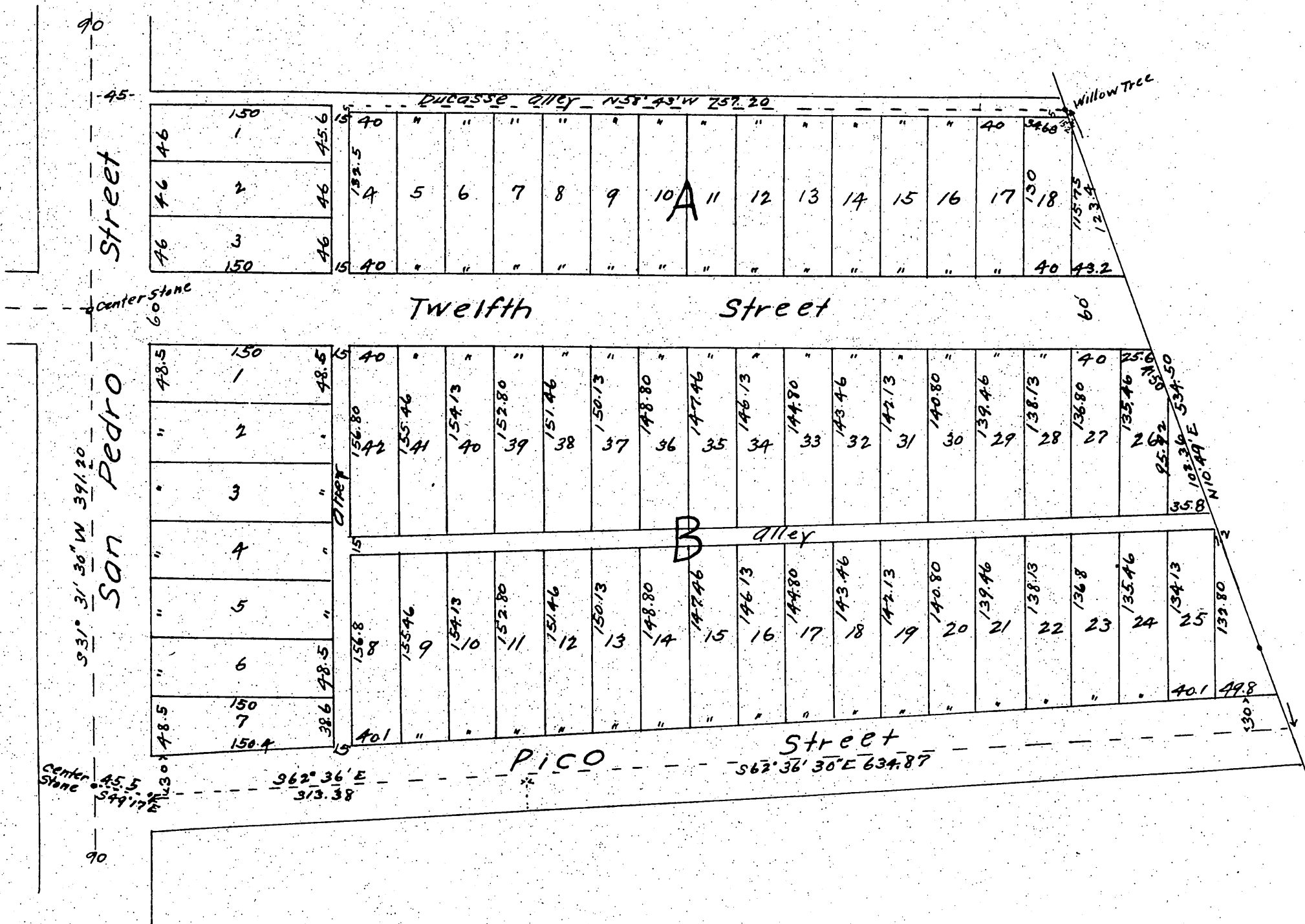


MAP

of the subdivision of the
Chiriotto Tract
Surveyed Jan 1887 by Fred Eaton C.E.
Scale 60 ft = 1"



A full true and correct copy of the original
(reduced to the scale of 100 feet to an inch)
recorded March 14 1887 at 11 O M at request
of Rosch, Pauly & Young
Frank A. Gibson County Recorder
By Geo. Ringle Deputy