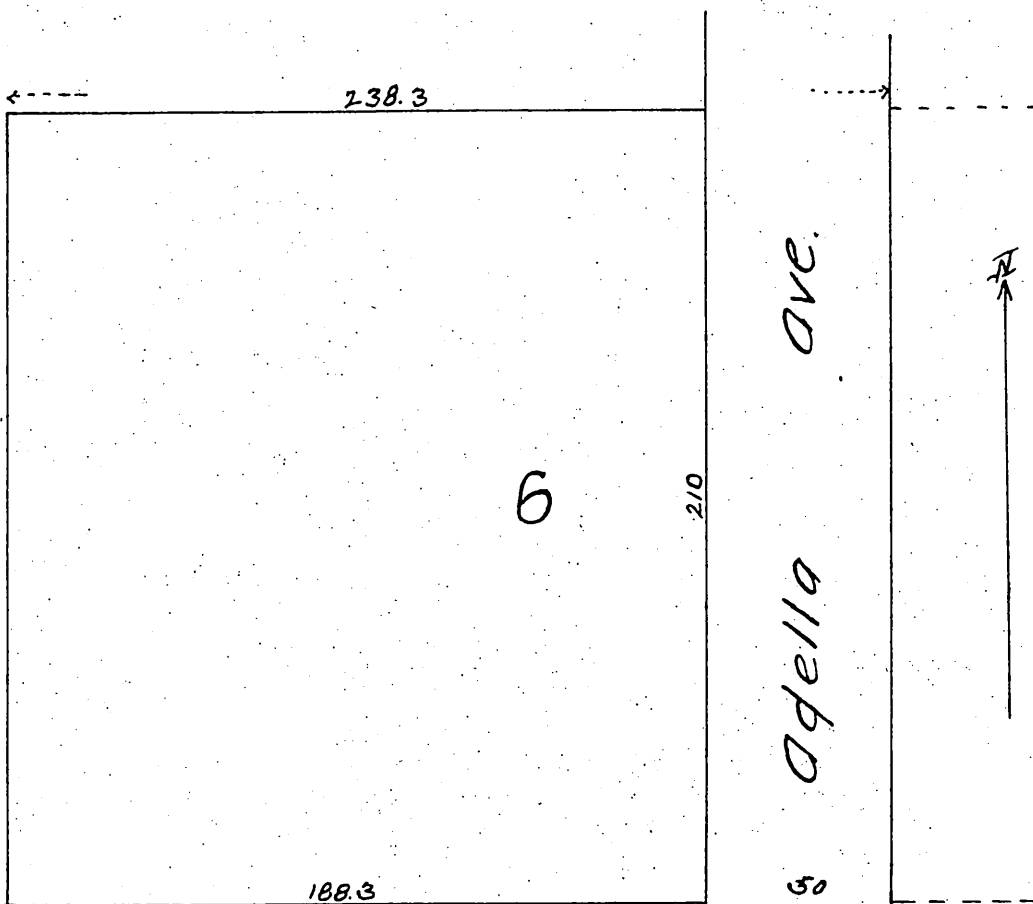


154

Replat of Lot 6 of
B. O. and Mary E. Clark's Subdivision
in Pasadena.

Showing the East 50 ft Reserved for Street by Allen and Landreth.



Villa Street

a full, true and correct copy of the original
(enlarged from the scale of 100 to 50 feet to one
inch) recorded March 15, 1887 at 8⁵³ A.M.
at request of Allen & Landreth

Frank A. Libson County Recorder.
By George Bugbee Deputy.