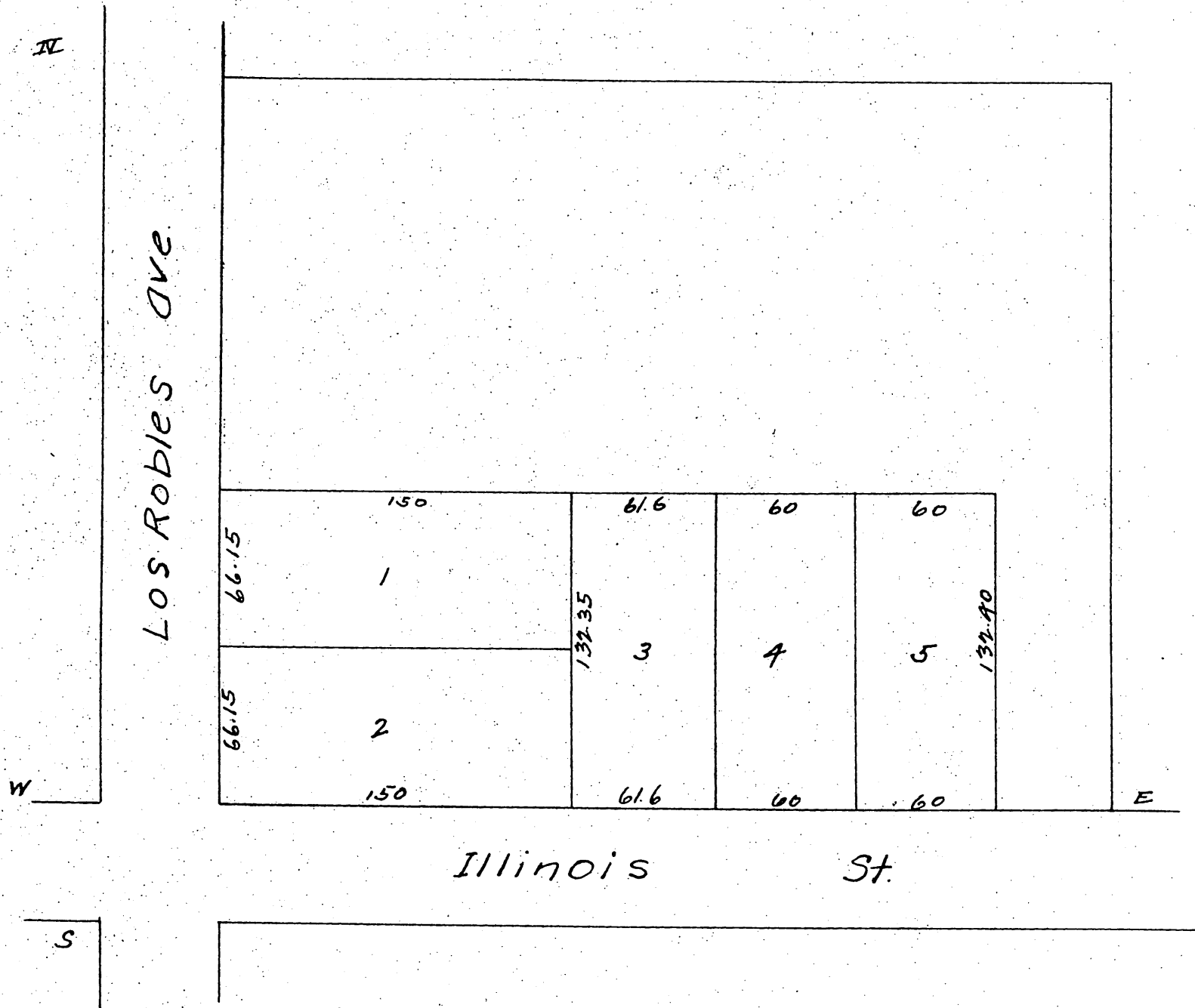


# MAP OF F. E. Shaw's

acre on the N.E. cor of Los Robles &  
Illinois Sts on the Grogan Tract  
Recorded in Book 165 Page 61  
Los Angeles Co. Records.

J. Norton Surveyor  
Scale 60ft = 1 in.



a full, true and correct copy of the original  
(reduced to the scale of 60 feet to one inch)  
recorded March 15 1887 at 10 min past 10 a.m.  
at request of E. H. Shaw.  
Frank A. Libson County Recorder.  
By Geo Bugbee Deputy.