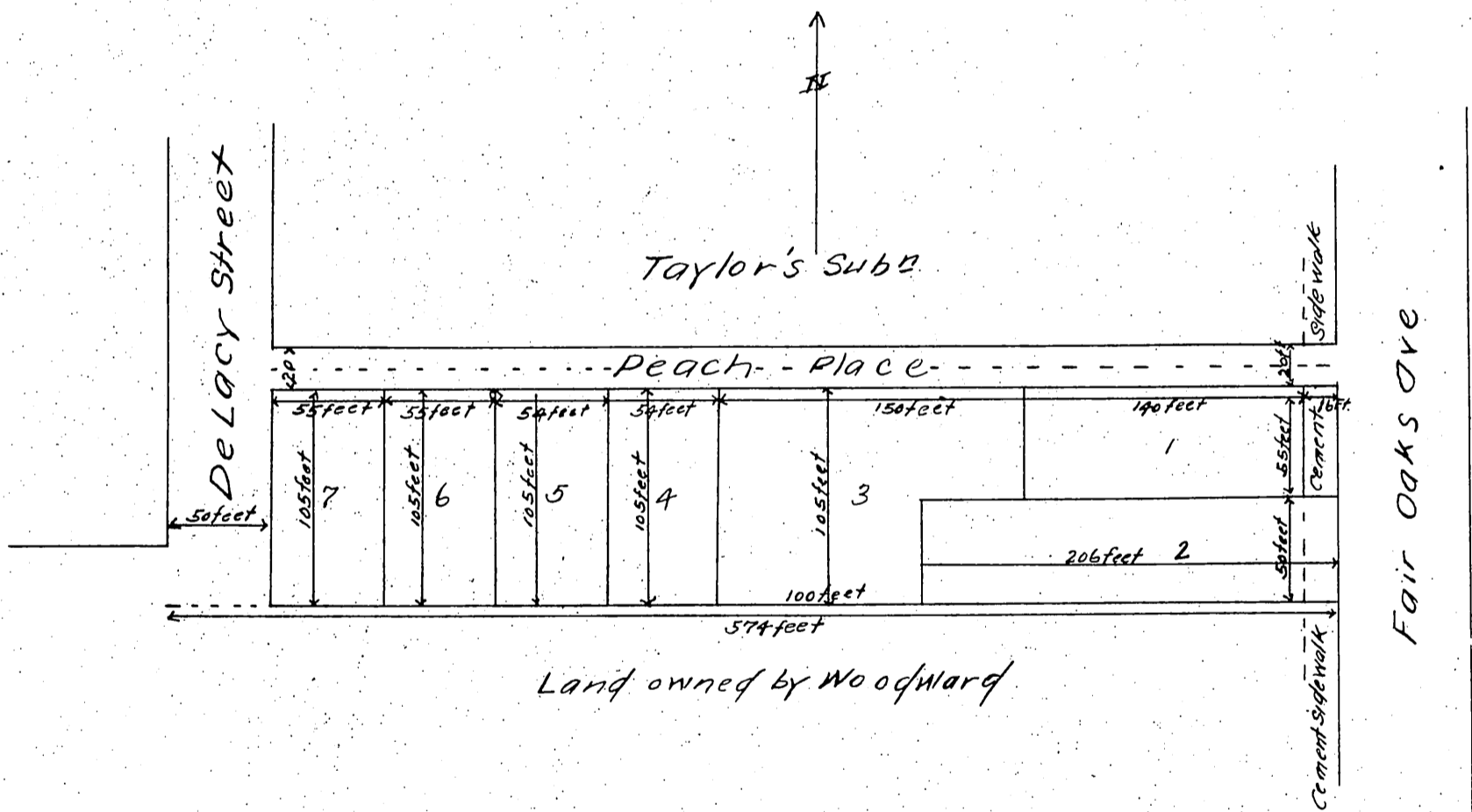


154

W. Nosworthy's Re-subdivision.

Being a portion of Berry & Elliott's Subdivision
of a portion of the land of the
San Gabriel Orange Grove Association
Scale 50 feet to one inch.



A full, true and correct copy of the original
 (reduced to the scale of 80 feet to one inch)
 recorded March 15 1887 at 30 min past 2 P.M.
 at request of W. Nosworthy.
 Frank A. Gibson County Recorder
 By Geo Bugbee Deputy.