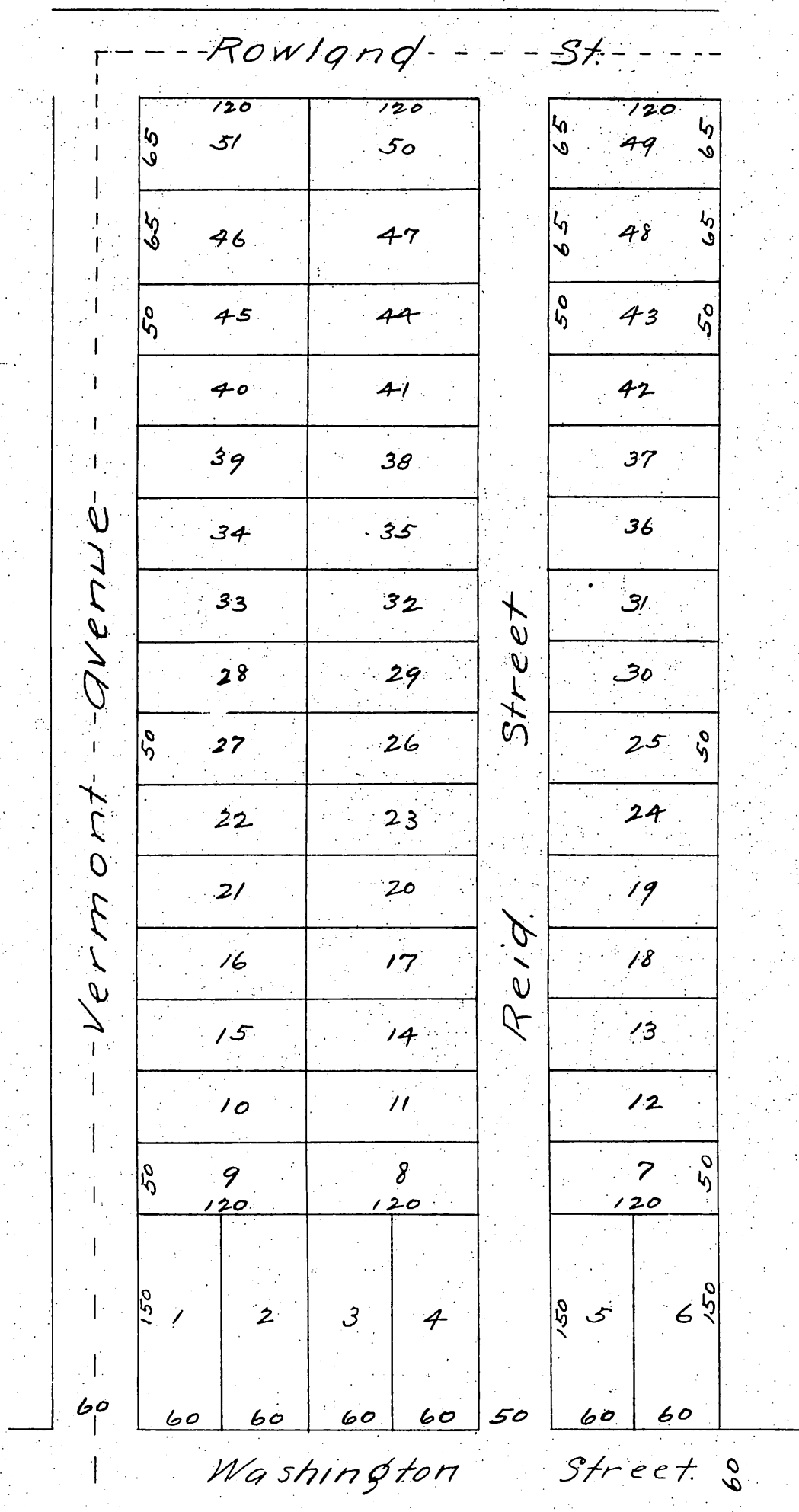


MAP OF THE Reid Addition TO Los Angeles

Situate in the SW corner of the NW 1/4 of Section 31

T. 1. S. R. 13 W. S. B. M.
Surveyed Oct. 2, 1886 by John Goldsworthy, Surveyor
True Courses



a full, true and correct copy of the original
(reduced to scale of 100 feet to one inch) recorded
March 16, 1887 at 40 min. Past 10 AM at request
of E. W. Reid.

Frank A. Gibson County Recorder.
By Geo. Dugbee Deputy.