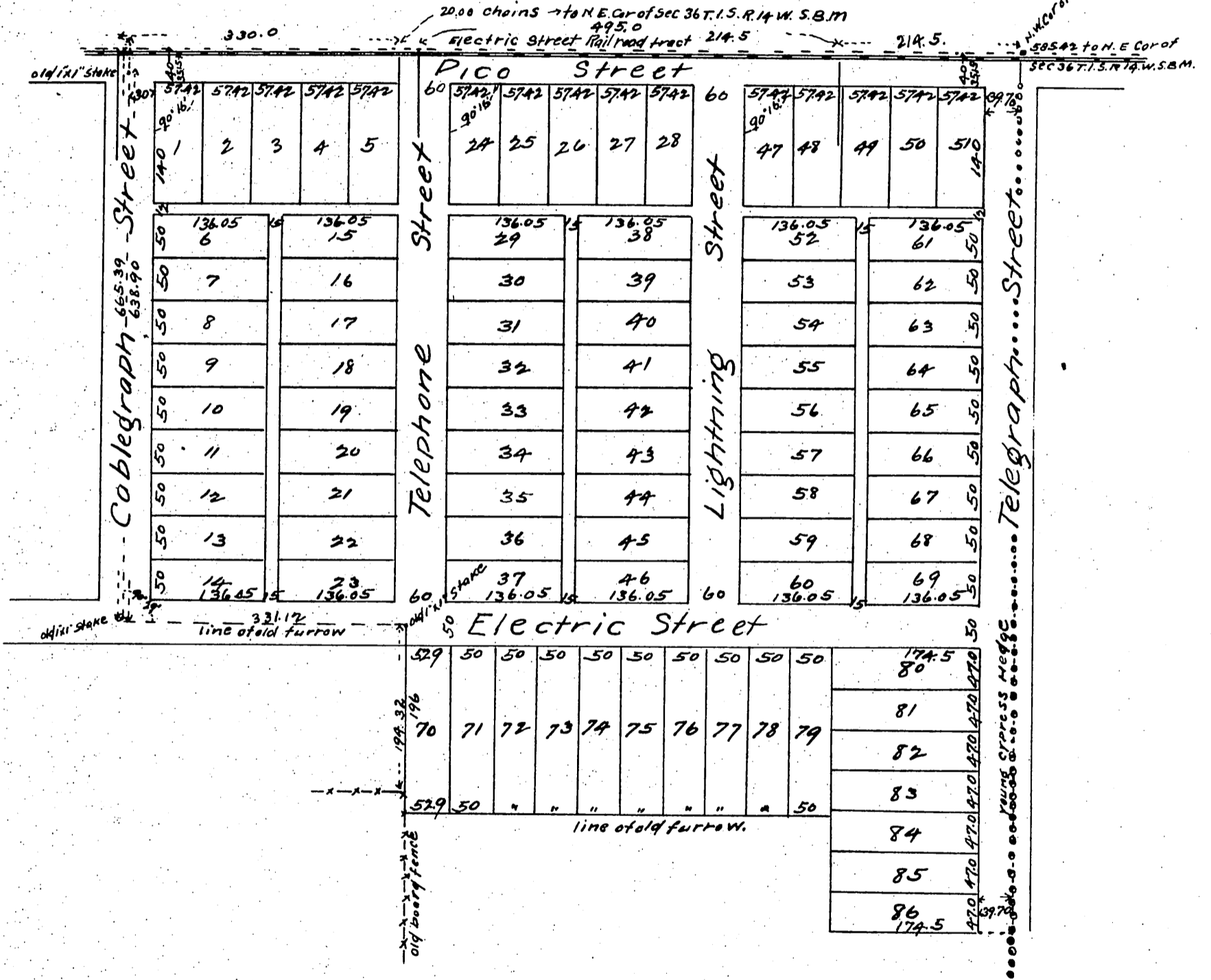


MAP OF THE South Side Tract

Being subdivision of the Haag, Alexander and
Dewing properties according to deeds made
by said Haag, Alexander, and Dewing to
F. C. Howes Trustee by deeds dated January 1st 1887
Surveyed by Fred Eaton C. E.
in Oct and Nov 1886



A full, true and correct copy of the original
(reduced from the scale of 60 to 150 feet to
one inch) recorded March 16 1887 at 1.40 P.M.
at request of Electric Railway Homestead Assn
Frank A. Libeau County Recorder
By Geo Bugbee Deputy.