

MAP

Showing a resubdivision of Lots 1, 3, 5, 7, 9, 11 & 13 in Block L of
George Cummings Subdivision

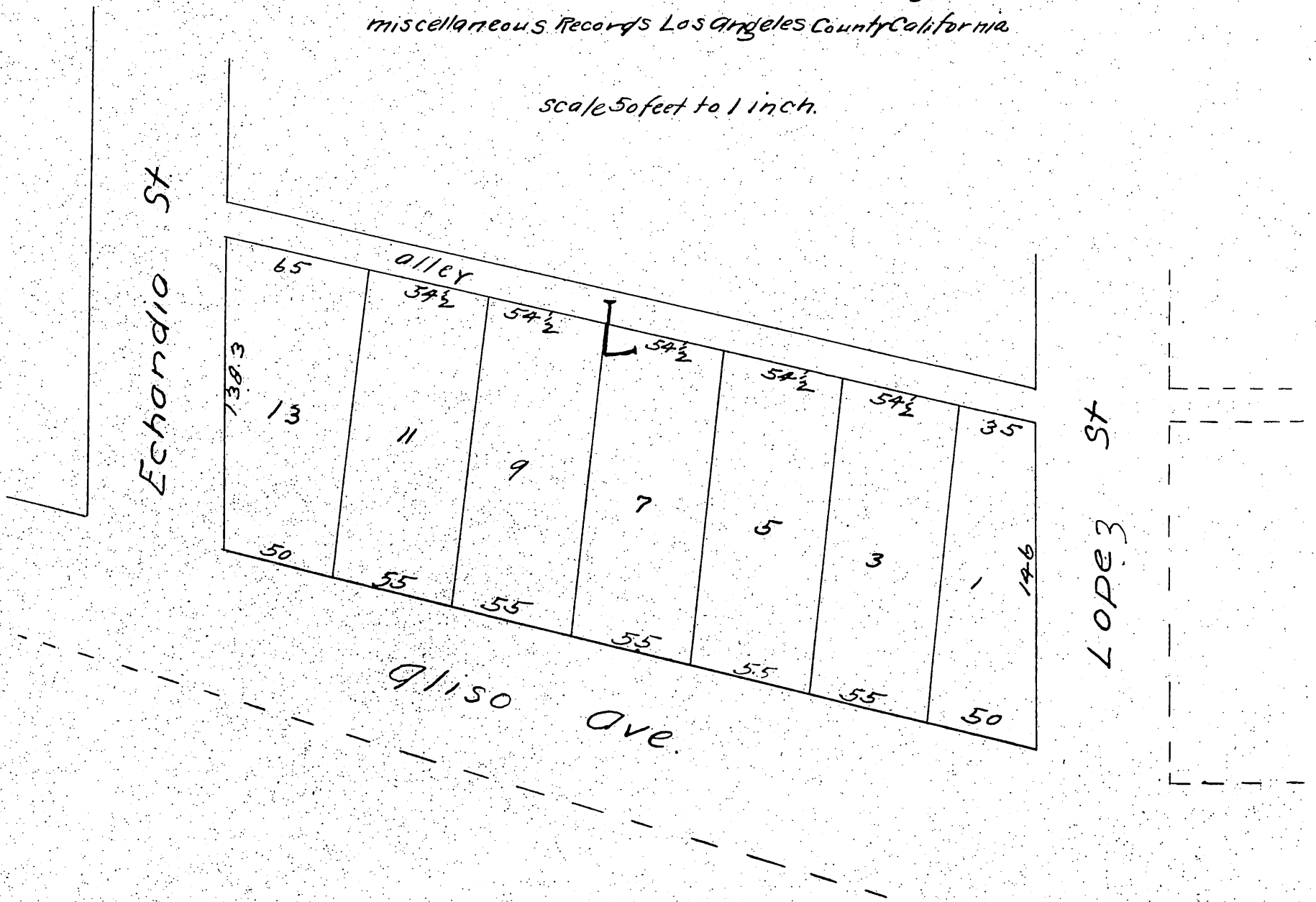
of portions (35 acres) of Lots 3 & 4 Block 60 Hancock's Survey

Los Angeles California.

Reference being had to map in Book 9 page 11

Miscellaneous Records Los Angeles County California.

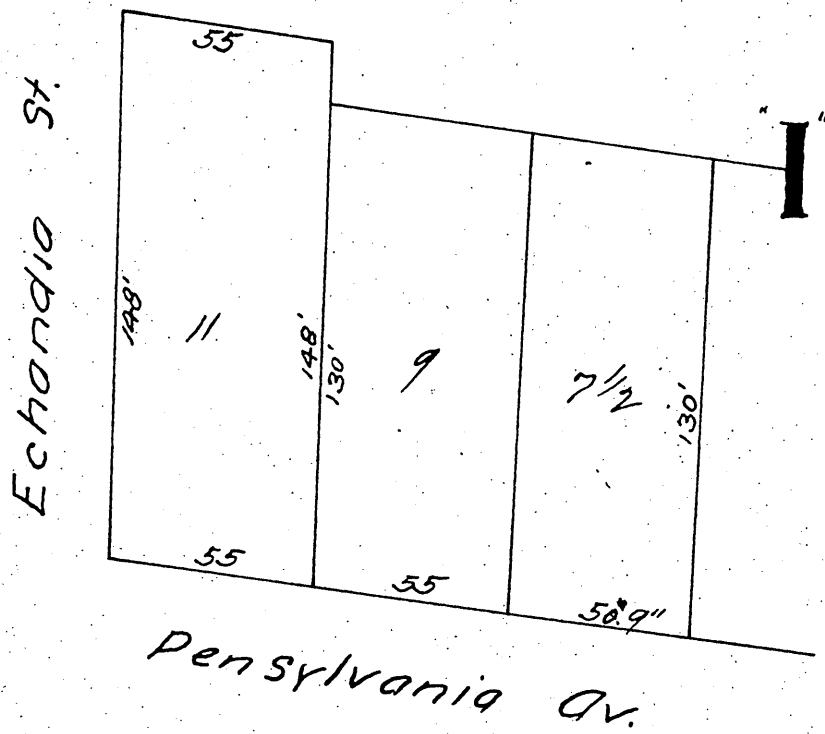
Scale 50 feet to 1 inch.



a full, true and correct copy of the original
 (reduced to the scale of 60 feet to one inch)
 recorded March 16, 1887 at 47 min past 2 P.M.
 at request of Geo Cummings
 Frank A. Liberu county Recorder
 By Geo Baybee Deputy.

4512

MAP
 Showing the renumbering of certain lots in Block I of
 Cummings Subdivision
 of (35 acre) Lot 3 Block 60 Hancock's
 Survey of Los Angeles California



A full, true and correct copy of the original
 recorded March 16, 1887 at 11 min past 3 P.M.
 at request of Geo Cummings,
 Frank A. Liber, County Recorder
 By Geo Bugbee Deputy