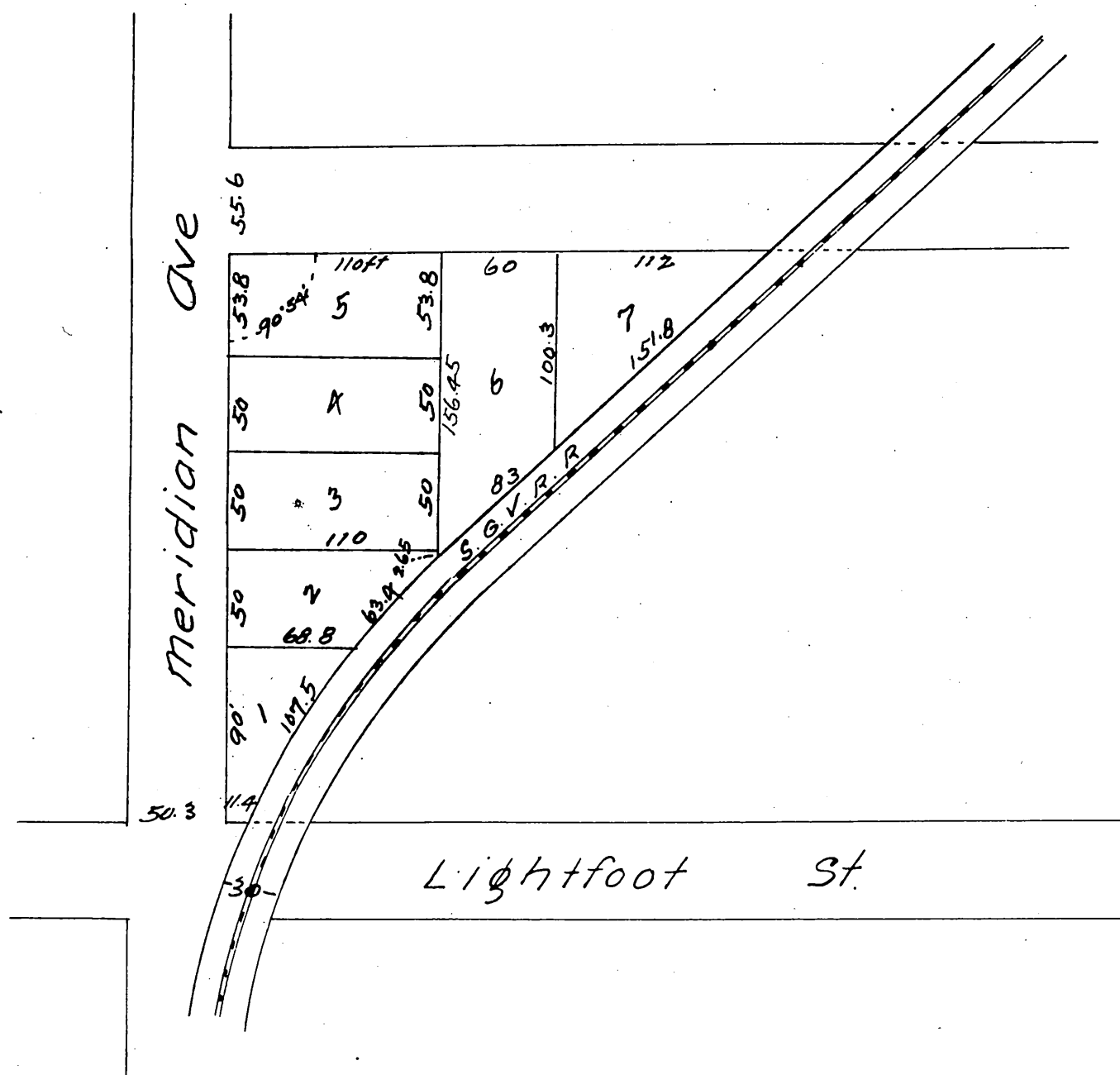


MAP  
 OF  
 Tallmadge's Subdivision  
 IN THE  
 Lightfoot Tract  
 So Pasadena Los Angeles cal.  
 G. R. Street Sun Mar 1887  
 Scale 50 ft per inch.



a full, true and correct copy of the original  
 (reduced to the scale of 80 feet to one inch)  
 recorded March 19, 1887 at 40 min past 9 a.m.  
 at request of F.W. Tallmadge.

Frank A. Gibson County Recorder  
 By Geo Bayles Deputy.