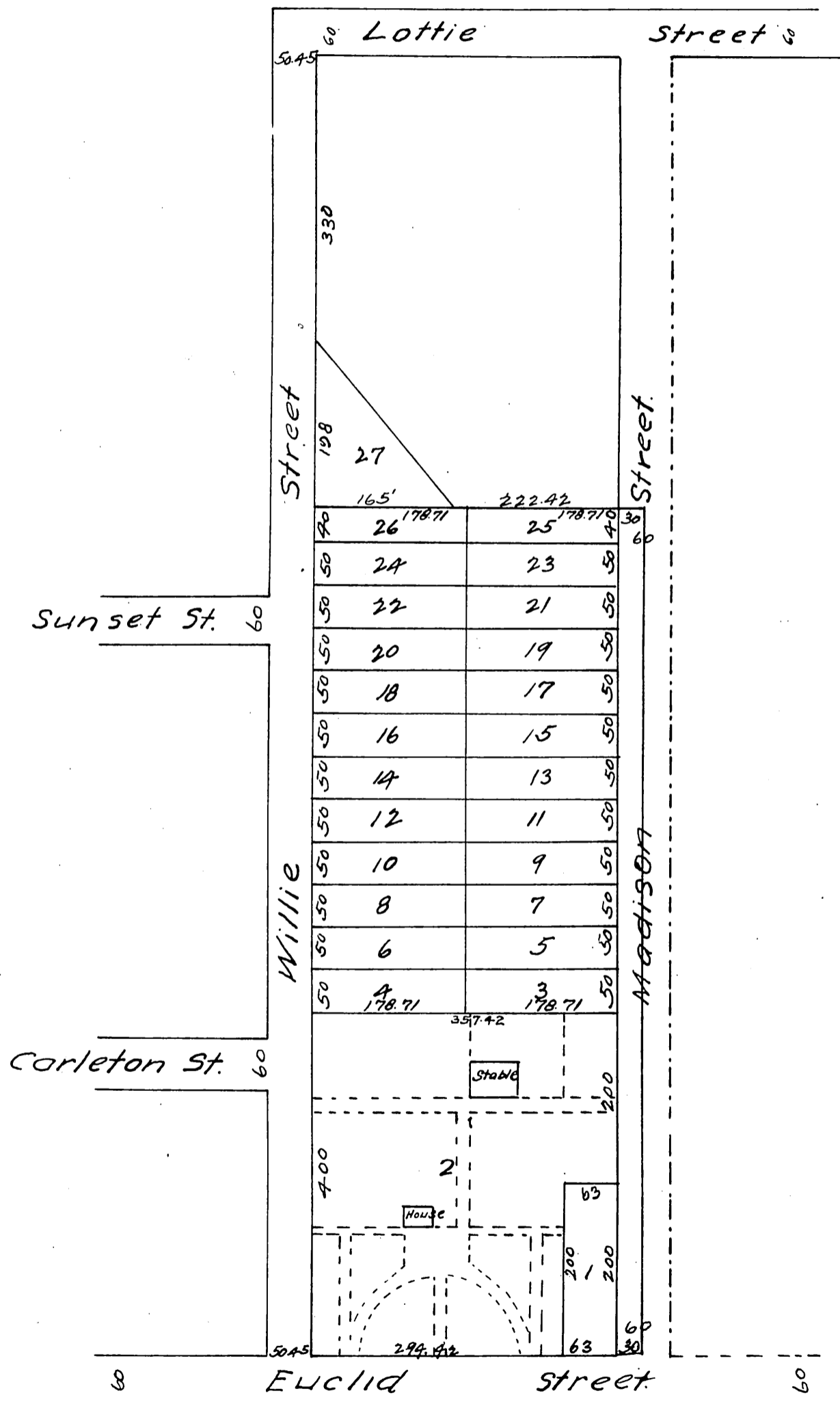


1524

MAP OF THE S. A. Widney Tract

Being part of
Lot 3 Block 72 Hancock's Survey of Los Angeles City
Subdivided February 1st 1887 by John Goldsworthy,
County Surveyor
Scale 50 feet to the inch.



a full true and correct copy of the original
(reduced to the scale of 150 feet to one inch)
recorded March 21st 1887 at 10 min Past
9 A.M. at request of S. A. Widney.
Frank A. Liborn county recorder
By Geo Bugbee Deputy.