

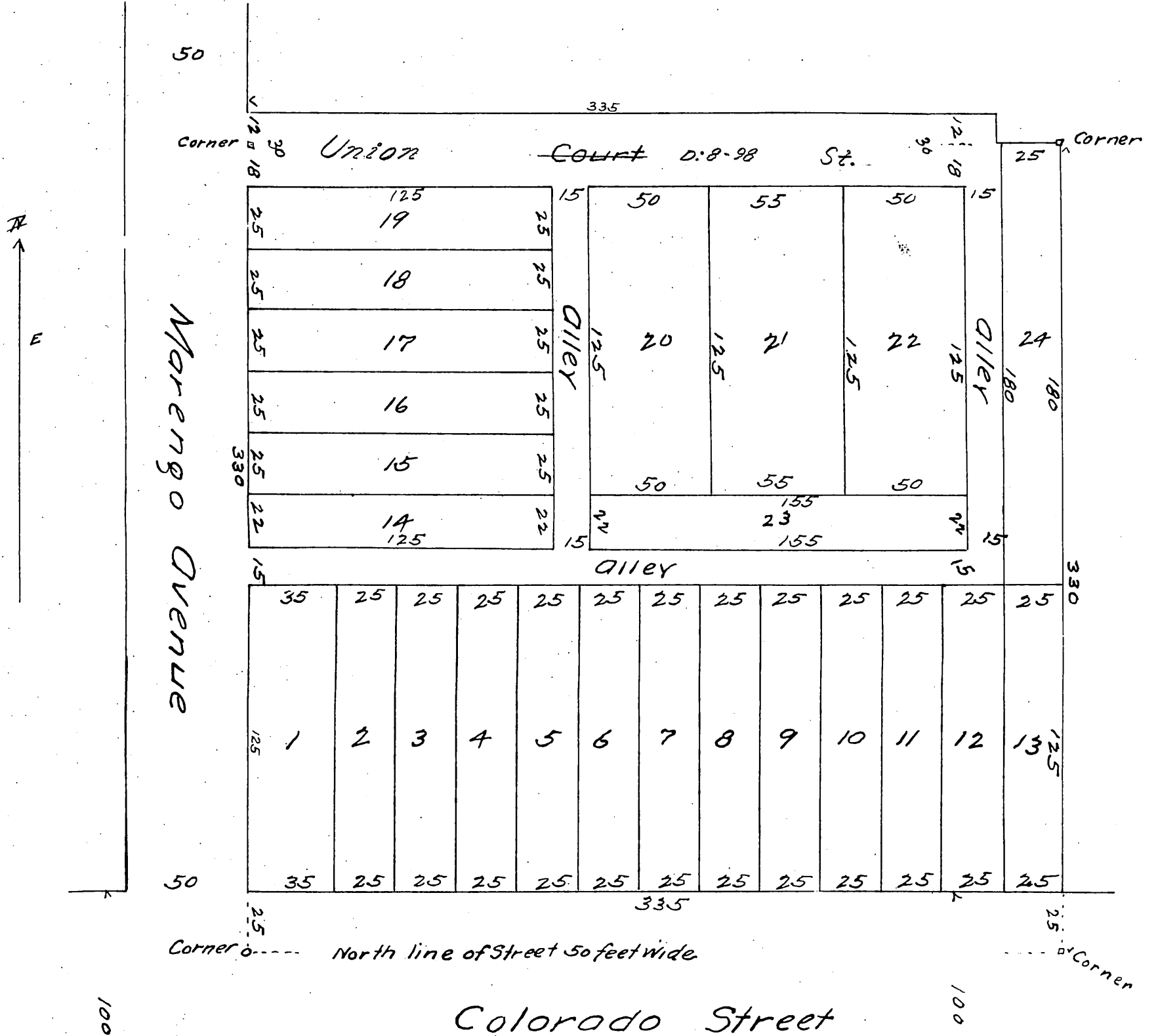
Skillen & Stratton's Subdivision

of the South West corner of Lot 9, Block C, San Pasqual.

Tract City of Pasadena Cal.

January 10th 1887 Wm W. Mills Surveyor

Scale 50 feet = one inch.



A full, true and correct copy of the original recorded March 21, 1887 at 25 min past 9 A.M. at request of Skillen & Stratton.

Frank A. Gibson County Recorder
By Geo. Ruggbee Deputy.