

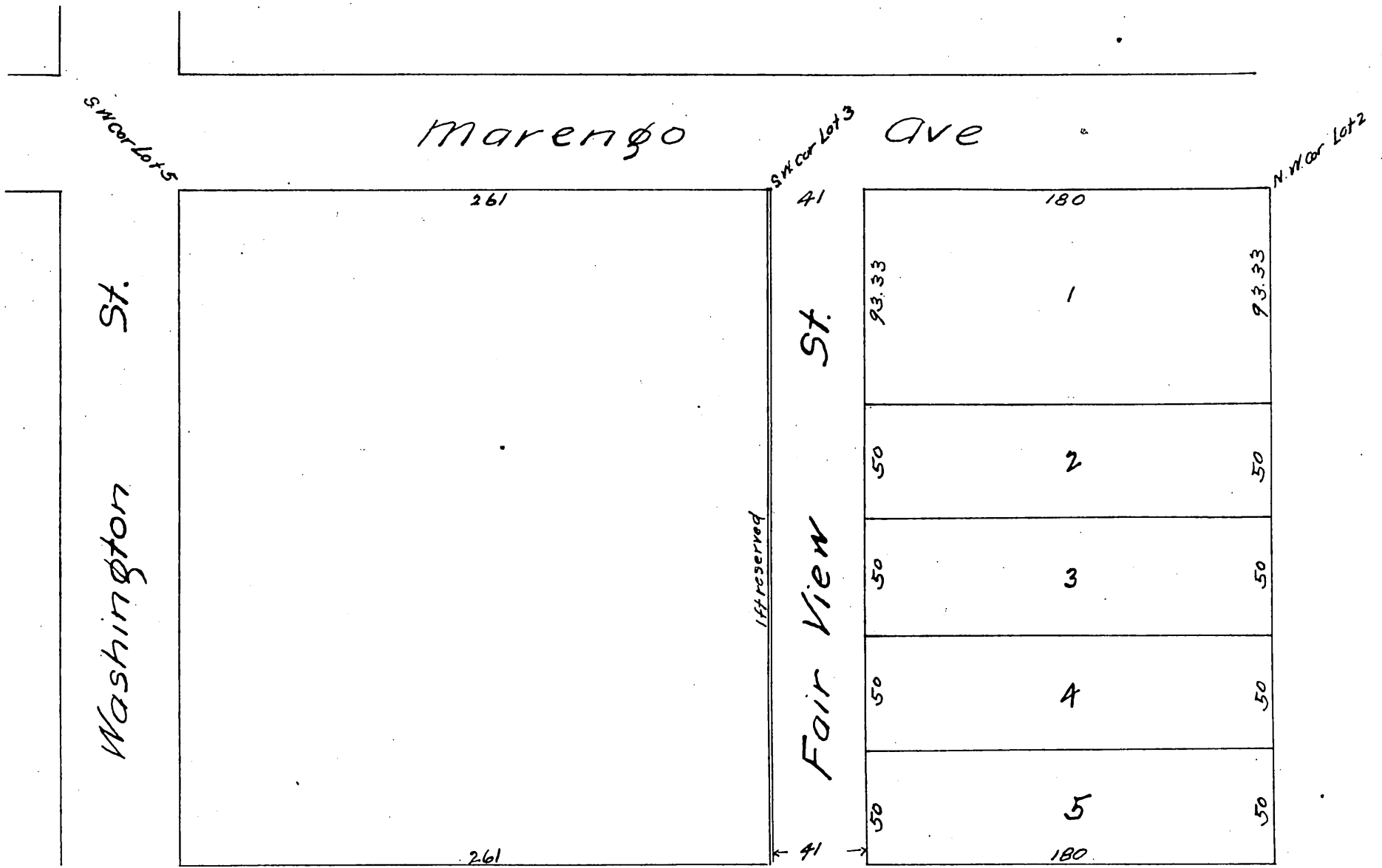
PLAT OF C. W. Swan's Subdivision

of Lots 2 & 3 of Mrs H.T. Yocum's Subdivision of BK 'O'
of Painter & Ball Tract Pasadena, Cal.

Los Angeles County

Surveyed March 1887 by J. M. Willard C.E.

Scale 60 ft - 1 inch



A full, true and correct copy of the original
recorded Mar 22, 1887 at 14 min past 11 a. m
at request of W.O. Swan

Frank A. Libere County Recorder
By Geo Bugbee Deputy