

MAP

OF THE

Glenrosa Tract

a subdivision of lands marked Croft in Division D
of the San Gabriel Orange Grove Association.

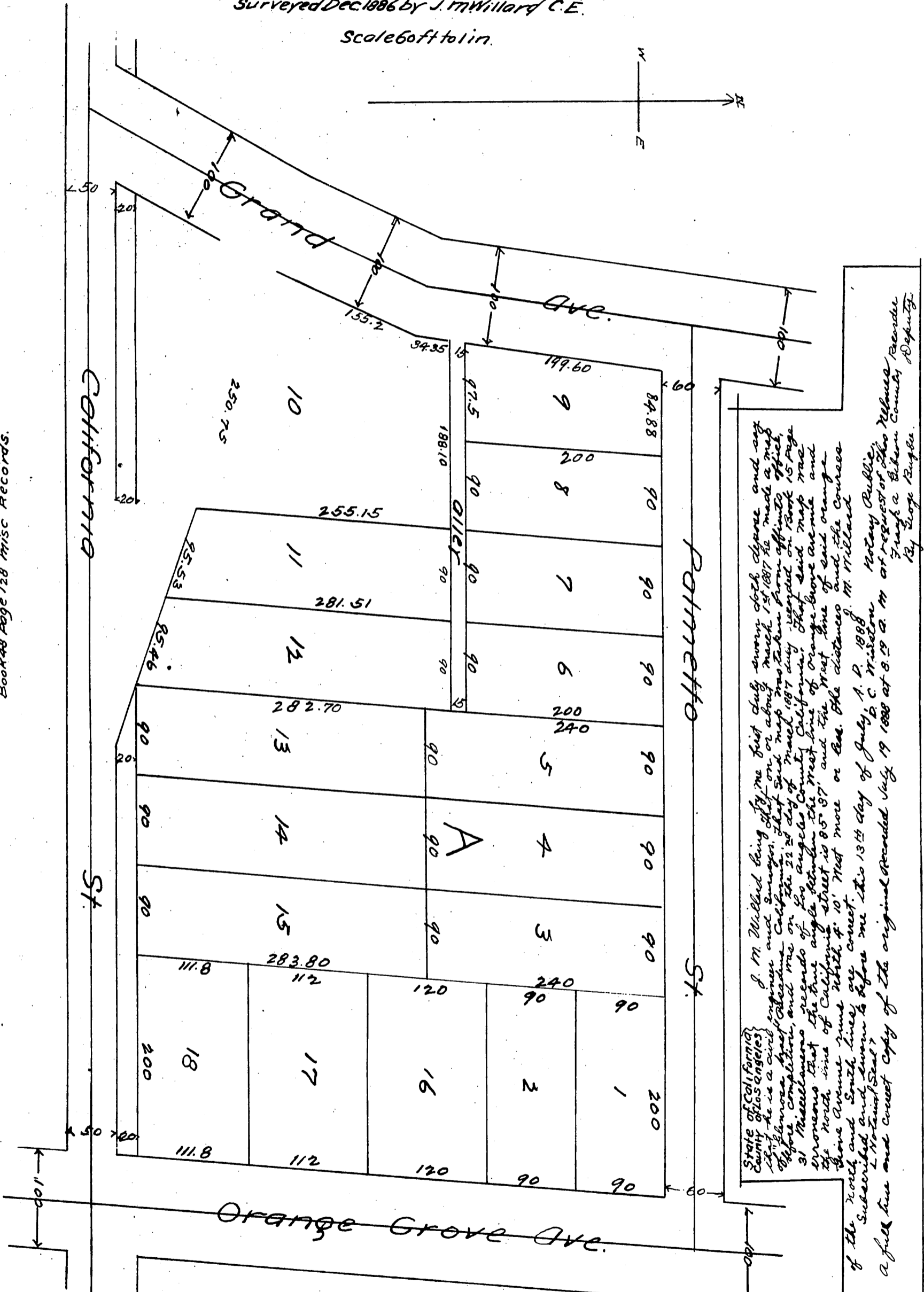
Pasadena Los Angeles Co Calif.

Property of Thomas Nelmes.

Surveyed Dec 1886 by J. M. Willard C.E.

Scale 60ft to in.

For resolution vacating Street see
Book 48 Page 128 Misc Records.



State of California
County of Los Angeles

J. M. Willard being by me just duly sworn, doth depose and say that he is a civil engineer and surveyor, that on or about March 1st 1887 he made a map of the Glenrosa Tract, California, that said map was taken from official office before completion, and was on the 22nd day of March 1887 duly recorded on Book 15 Page 31 Miscellaneous records of Los Angeles County, California; that said map was erroneous that the true angle between the west line of Orange Grove Avenue and the north line of California Street is 85° 57' and the west line of said Orange Grove Avenue runs with it 10' West more or less. The distances and the courses of the North and South lines are correct.

A full true and correct copy of the original recorded July 19 1888 at 8:19 A. M. at request of Thomas Nelmes, Recorder of the County of Los Angeles, Pasadena, California, by George Bugbe, Deputy.

a full true and correct copy of the original
(reduced to the scale of 100 feet to one inch)
recorded March 22, 1887 at 5 min past 2 P.M.
at request of Thomas Nelmes.

Frank A Gibson county Recorder.
By Geo Bugbe Deputy.